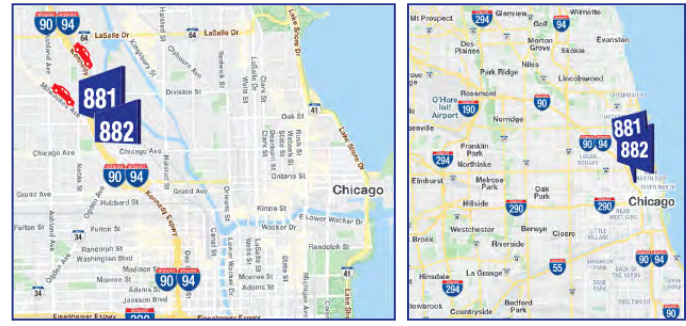


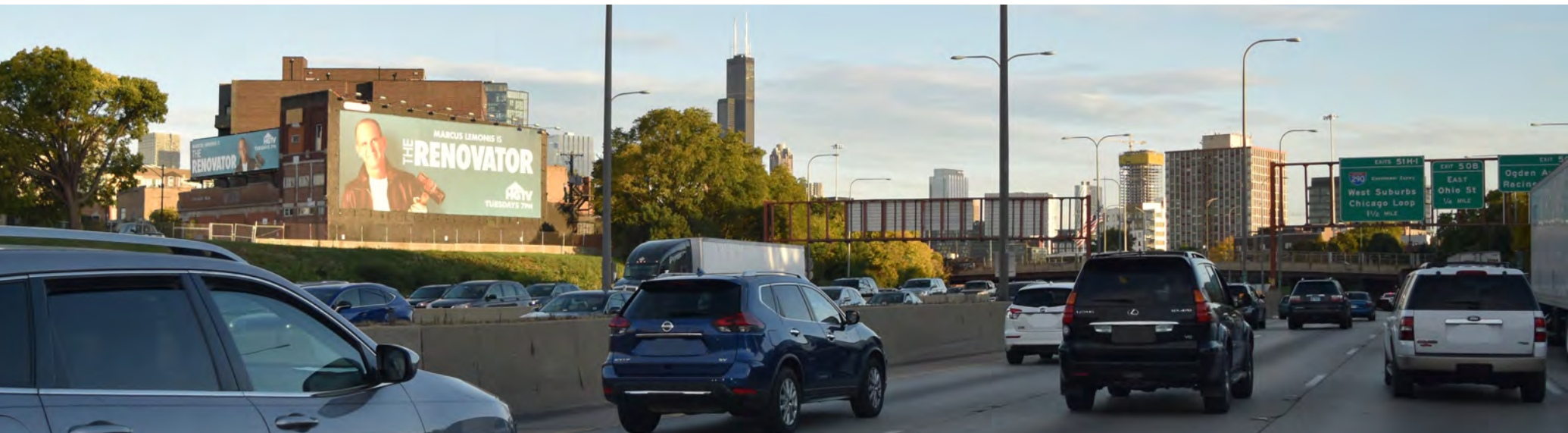
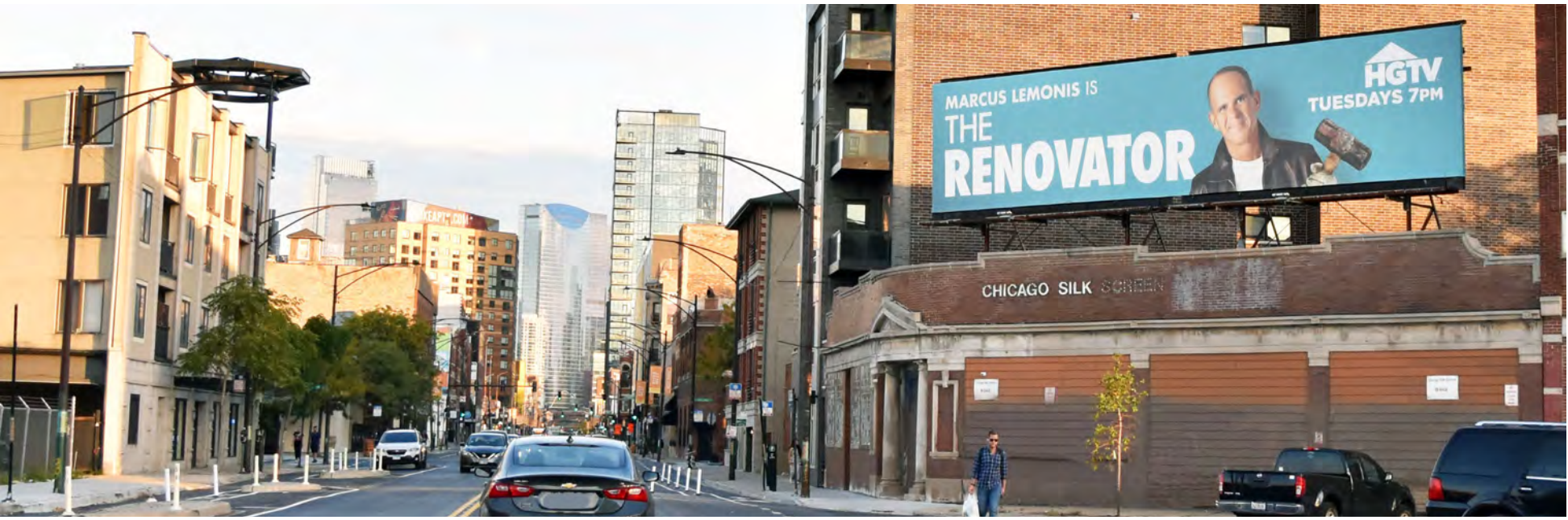
MEGA WALL + ROOFTOP: LANDMARK THROW MESSAGE / SEQUENTIAL : I-90/94 KENNEDY EXPRESSWAY EB INBOUND AND MILWAUKEE AVE

IMW882: 27'X74'
+ IM881: 11'X50'

MEDIA:	VINYL WALL 27'X74' + ROOFTOP 11X50	AREA:	RIVER NORTH, LOOP, W. LOOP
DIMENSIONS:	27'H X 74'W + 11'H X 50'W	LAT:	41.8978922
PRIMARY:	I-90/94 KENNEDY EXPWY EB IN	LONG:	-87.6585688
PLANT #:	IMW882 + IM881	FACES:	NW + N
		GEOPATH #:	598556 + 1581254

I-90/94 KENNEDY EXPRESSWAY EB INBOUND AND MILWAUKEE AVE EB FNW 27'H X 74'W MASSIVE WALL AND 11'HX50'W ROOFTOP. HUGE TRAFFIC KENNEDY EXPWY EB TO RIVER NORTH (AT OHIO ST EXIT), LOOP, WEST LOOP, I-290 AHEAD, SECONDARY MILWAUKEE AVE EB. MEGA WALL + ROOFTOP.



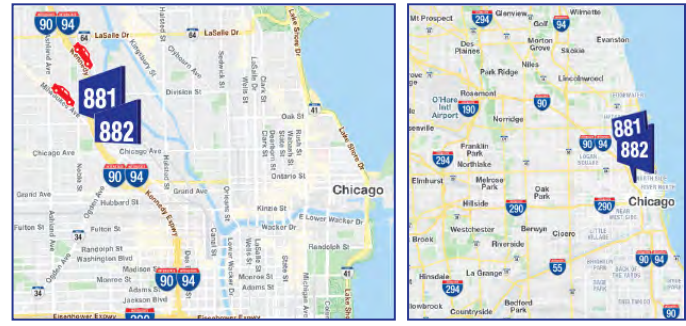


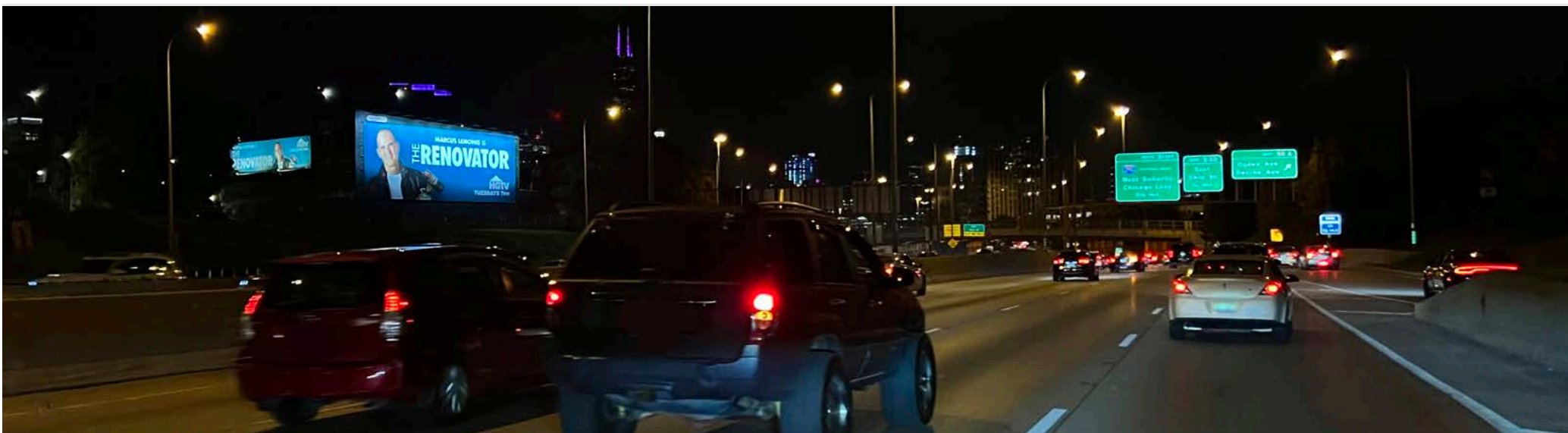
MEGA WALL + ROOFTOP: LANDMARK THROW MESSAGE / SEQUENTIAL : I-90/94 KENNEDY EXPRESSWAY EB INBOUND AND MILWAUKEE AVE

IMW882: 27'X74'
+ IM881: 11'X50'

MEDIA:	VINYL WALL 27'X74' + ROOFTOP 11X50	AREA:	RIVER NORTH, LOOP, W. LOOP
DIMENSIONS:	27'H X 74'W + 11'H X 50'W	LAT:	41.8978922
PRIMARY:	I-90/94 KENNEDY EXPWY EB IN	LONG:	-87.6585688
PLANT #:	IMW882 + IM881	FACES:	NW + N
		GEOPATH #:	598556 + 15812454

I-90/94 KENNEDY EXPRESSWAY EB INBOUND AND MILWAUKEE AVE EB FNW 27'H X 74'W MASSIVE WALL AND 11'HX50'W ROOFTOP, HUGE TRAFFIC KENNEDY EXPWY EB TO RIVER NORTH (AT OHIO ST EXIT), LOOP, WEST LOOP, I-290 AHEAD, SECONDARY MILWAUKEE AVE EB. MEGA WALL + ROOFTOP.



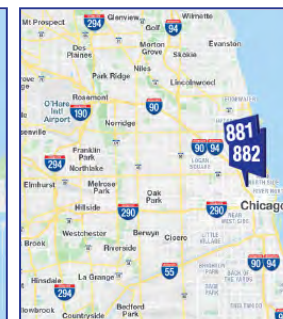
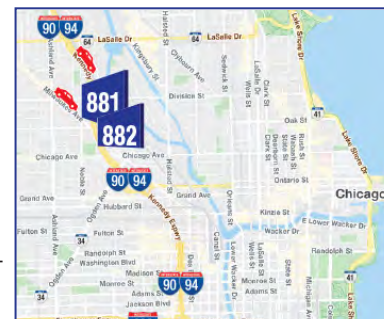


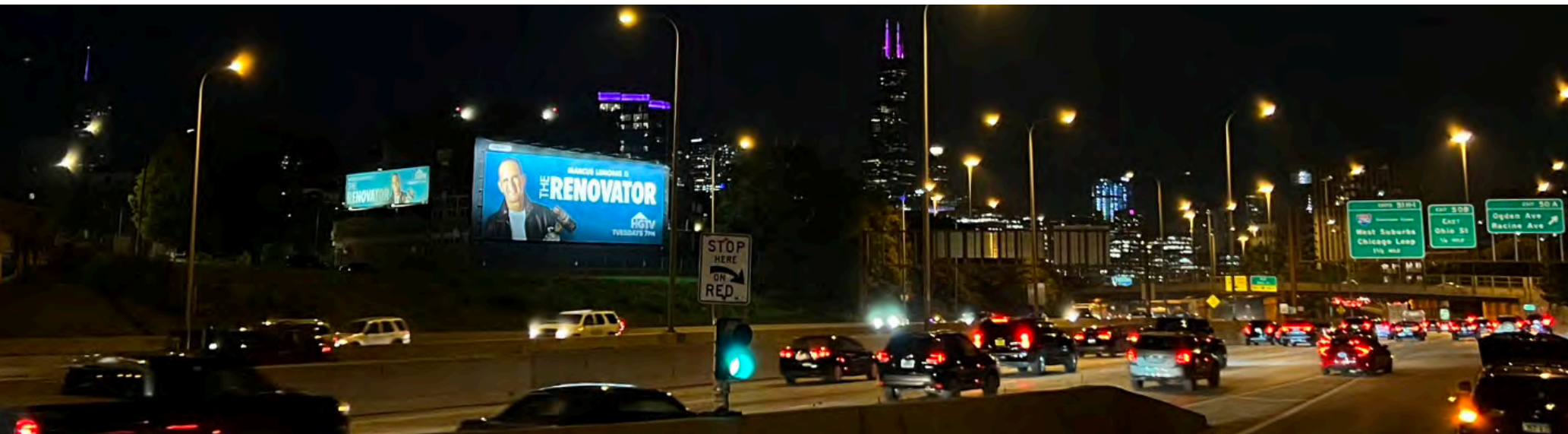
MEGA WALL + ROOFTOP: LANDMARK THROW MESSAGE / SEQUENTIAL : I-90/94 KENNEDY EXPRESSWAY EB INBOUND AND MILWAUKEE AVE

IMW882: 27'X74'
+ IM881: 11'X50'

MEDIA:	VINYL WALL 27'X74' + ROOFTOP 11X50	AREA:	RIVER NORTH, LOOP, W. LOOP
DIMENSIONS:	27'H X 74'W + 11'H X 50'W	LAT:	41.8978922
		LONG:	-87.6585688
PRIMARY:	I-90/94 KENNEDY EXPWY EB IN	FACES:	NW + N
PLANT #:	IMW882 + IM881	GEOPATH #:	598556 + 15812454

I-90/94 KENNEDY EXPRESSWAY EB INBOUND AND MILWAUKEE AVE EB FNW 27' X 74'W MASSIVE WALL AND 11'X50'W ROOFTOP, HUGE TRAFFIC KENNEDY EXPWY EB TO RIVER NORTH (AT OHIO ST EXIT), LOOP, WEST LOOP, I-290 AHEAD, SECONDARY MILWAUKEE AVE EB. MEGA WALL + ROOFTOP.





I-90/94 KENNEDY EXPRESSWAY EB INBOUND AT MILWAUKEE AVE FNW 27'X74' LANDMARK WALL IN TO: RIVER NORTH, LOOP, W. LOOP, I-290 AHEAD

IMW882



MEDIA:	LANDMARK VINYL WALLSCAPE	AREA:	60642, RIVER NORTH, LOOP, W. LOOP AHEAD
DIMENSIONS:	27'H X 74'W	LAT:	41.897838
		LONG:	-87.658564
PRIMARY:	I-90/94 KENNEDY EXPWY EB	FACES:	NORTHWEST
CROSS:	MILWAUKEE AVE	PLANT #:	IMW882
TAGS:	I-90/94, KENNEDY EXPWY, LOOP RIVER NORTH, NEAR NORTH, ORD	GEOPATH #:	598556

I-90/94 KENNEDY EXPRESSWAY EB INBOUND AT MILWAUKEE AVE FNW 27'H X 74'W MASSIVE WALL, HUGE TRAFFIC KENNEDY EXPRESSWAY EB TO RIVER NORTH (AT OHIO ST EXIT), LOOP, WEST LOOP, FUTON MARKET, I-290 AHEAD, SECONDARY MILWAUKEE AVE EB. LANDMARK MEGA WALL

