

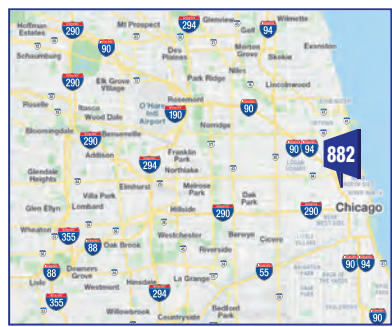
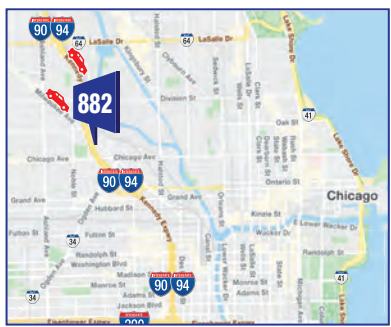
I-90/94 KENNEDY EXPRESSWAY EB INBOUND AT MILWAUKEE AVE FNW 27'X74' LANDMARK WALL IN TO: RIVER NORTH, LOOP, W. LOOP, I-290 AHEAD

IMW882



MEDIA:	LANDMARK VINYL WALLSCAPE	AREA:	60642, RIVER NORTH, LOOP, W. LOOP AHEAD
DIMENSIONS:	27'H X 74'W	LAT:	41.897838
		LONG:	-87.658564
PRIMARY:	I-90/94 KENNEDY EXPWY EB	FACES:	NORTHWEST
CROSS:	MILWAUKEE AVE	PLANT #:	IMW882
TAGS:	I-90/94, KENNEDY EXPWY, LOOP RIVER NORTH, NEAR NORTH, ORD	GEOPATH #:	598556

I-90/94 KENNEDY EXPRESSWAY EB INBOUND AT MILWAUKEE AVE FNW 27' X 74' MASSIVE WALL, HUGE TRAFFIC KENNEDY EXPRESSWAY EB TO RIVER NORTH (AT OHIO ST EXIT), LOOP, WEST LOOP, FUTON MARKET, I-290 AHEAD, SECONDARY MILWAUKEE AVE EB. LANDMARK MEGA WALL





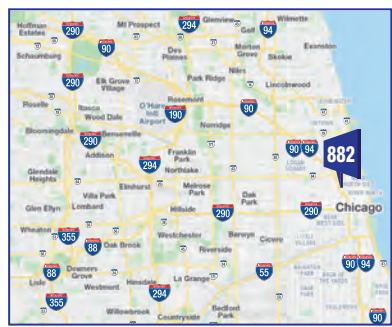
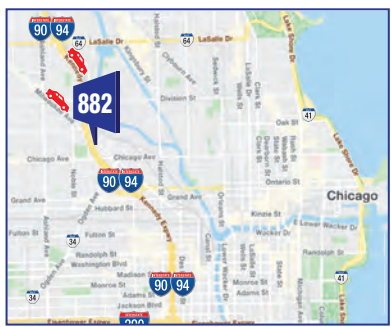
I-90/94 KENNEDY EXPRESSWAY EB INBOUND AT MILWAUKEE AVE FNW 27'X74' LANDMARK WALL IN TO: RIVER NORTH, LOOP, W. LOOP, I-290 AHEAD

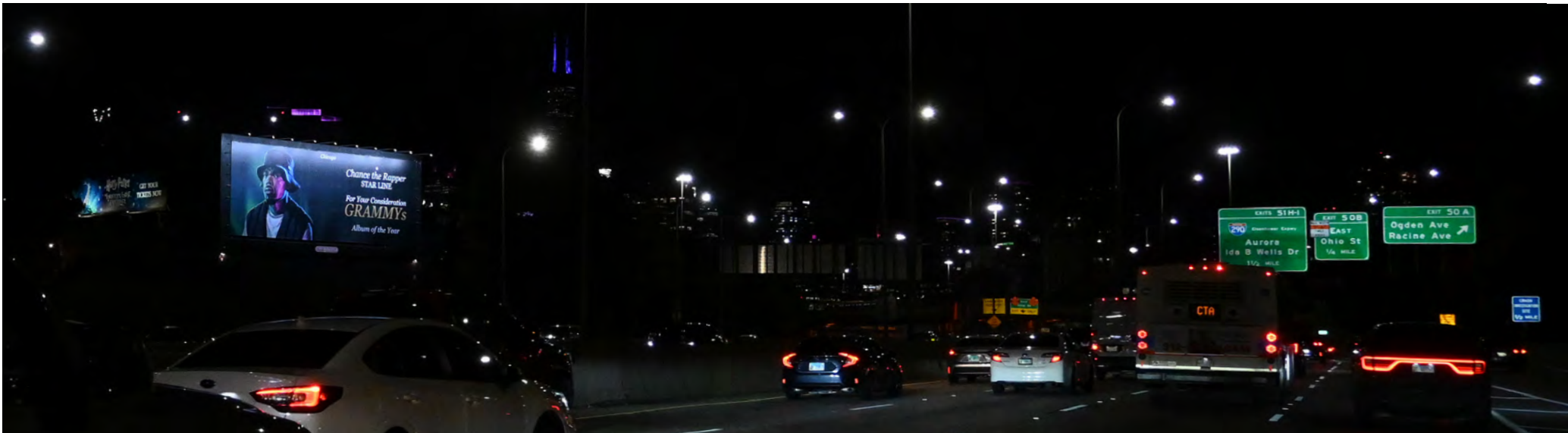
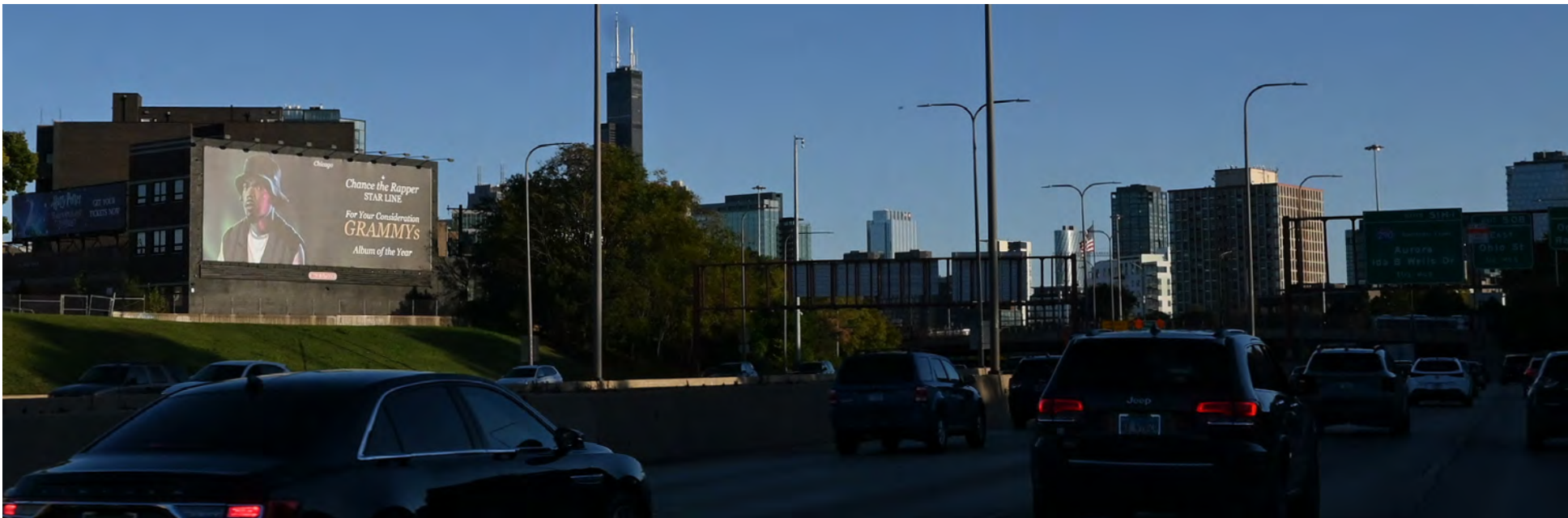
IMW882



MEDIA:	LANDMARK VINYL WALLSCAPE	AREA:	60642, RIVER NORTH, LOOP, W. LOOP AHEAD
DIMENSIONS:	27'H X 74'W	LAT:	41.897838
		LONG:	-87.658564
PRIMARY:	I-90/94 KENNEDY EXPWY EB	FACES:	NORTHWEST
CROSS:	MILWAUKEE AVE	PLANT #:	IMW882
TAGS:	I-90/94, KENNEDY EXPWY, LOOP RIVER NORTH, NEAR NORTH, ORD	GEOPATH #:	598556

I-90/94 KENNEDY EXPRESSWAY EB INBOUND AT MILWAUKEE AVE FNW 27' X 74'W MASSIVE WALL, HUGE TRAFFIC KENNEDY EXPRESSWAY EB TO RIVER NORTH (AT OHIO ST EXIT), LOOP, WEST LOOP, FUTON MARKET, I-290 AHEAD, SECONDARY MILWAUKEE AVE EB. LANDMARK MEGA WALL





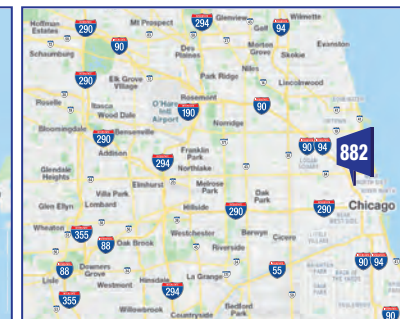
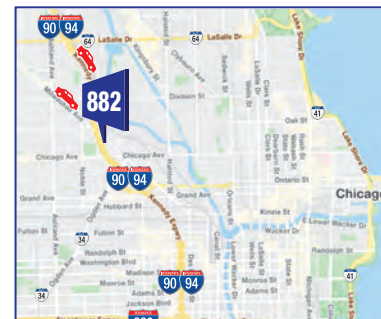
I-90/94 KENNEDY EXPRESSWAY EB INBOUND AT MILWAUKEE AVE FNW 27'X74' LANDMARK WALL IN TO: RIVER NORTH, LOOP, W. LOOP, I-290 AHEAD

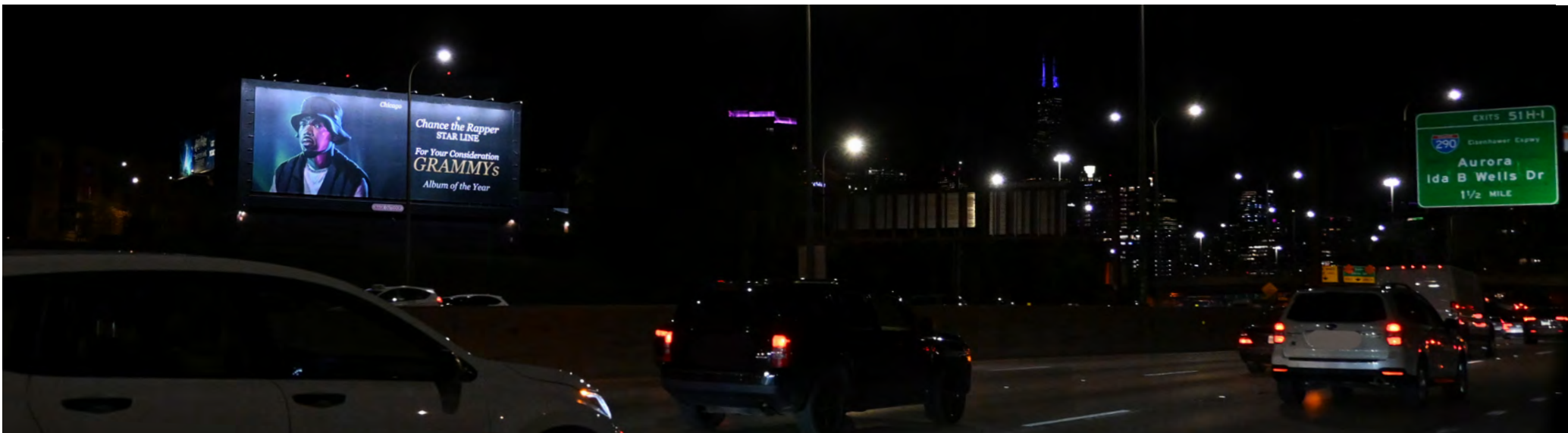
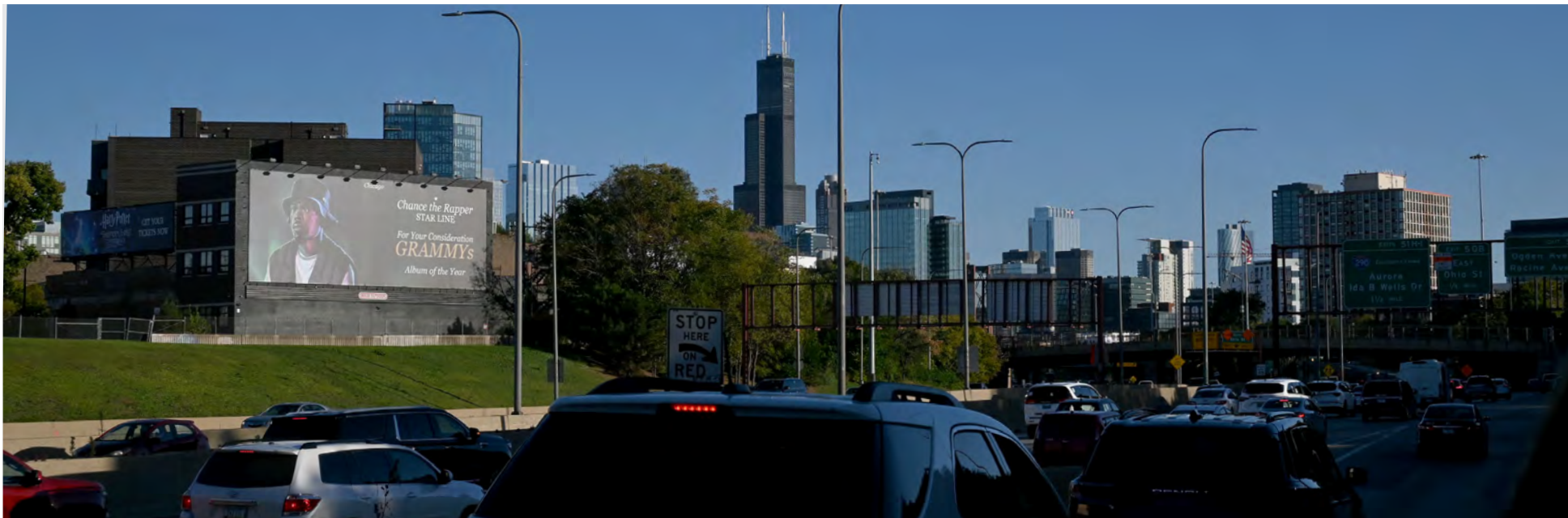
IMW882



MEDIA:	LANDMARK VINYL WALLSCAPE	AREA:	60642, RIVER NORTH, LOOP, W. LOOP AHEAD		
DIMENSIONS:	27'H X 74'W	LAT:	41.897838	LONG:	-87.658564
PRIMARY:	I-90/94 KENNEDY EXPWY EB	FACES:	NORTHWEST		
CROSS:	MILWAUKEE AVE	PLANT #:	IMW882		
TAGS:	I-90/94, KENNEDY EXPWY, LOOP RIVER NORTH, NEAR NORTH, ORD	GEOPATH #:	598556		

I-90/94 KENNEDY EXPRESSWAY EB INBOUND AT MILWAUKEE AVE FNW 27' X 74' MASSIVE WALL, HUGE TRAFFIC KENNEDY EXPRESSWAY EB TO RIVER NORTH (AT OHIO ST EXIT), LOOP, WEST LOOP, FUTON MARKET, I-290 AHEAD, SECONDARY MILWAUKEE AVE EB. LANDMARK MEGA WALL





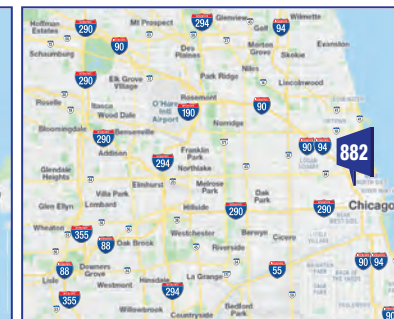
I-90/94 KENNEDY EXPRESSWAY EB INBOUND AT MILWAUKEE AVE FNW 27'X74' LANDMARK WALL IN TO: RIVER NORTH, LOOP, W. LOOP, I-290 AHEAD

IMW882



MEDIA:	LANDMARK VINYL WALLSCAPE	AREA:	60642, RIVER NORTH, LOOP, W. LOOP AHEAD		
DIMENSIONS:	27'H X 74'W	LAT:	41.897838	LONG:	-87.658564
PRIMARY:	I-90/94 KENNEDY EXPWY EB	FACES:	NORTHWEST		
CROSS:	MILWAUKEE AVE	PLANT #:	IMW882		
TAGS:	I-90/94, KENNEDY EXPWY, LOOP RIVER NORTH, NEAR NORTH, ORD	GEOPATH #:	598556		

I-90/94 KENNEDY EXPRESSWAY EB INBOUND AT MILWAUKEE AVE FNW 27' X 74'W MASSIVE WALL, HUGE TRAFFIC KENNEDY EXPRESSWAY EB TO RIVER NORTH (AT OHIO ST EXIT), LOOP, WEST LOOP, FUTON MARKET, I-290 AHEAD, SECONDARY MILWAUKEE AVE EB. LANDMARK MEGA WALL





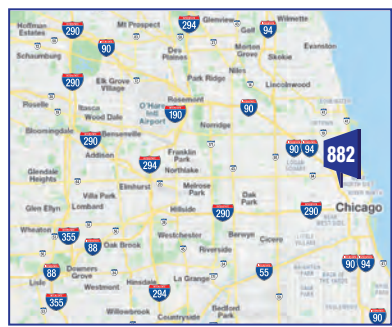
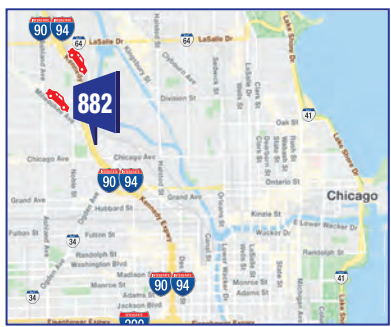
I-90/94 KENNEDY EXPRESSWAY EB INBOUND AT MILWAUKEE AVE FNW 27'X74' LANDMARK WALL IN TO: RIVER NORTH, LOOP, W. LOOP, I-290 AHEAD

IMW882



MEDIA:	LANDMARK VINYL WALLSCAPE	AREA:	60642, RIVER NORTH, LOOP, W. LOOP AHEAD
DIMENSIONS:	27'H X 74'W	LAT:	41.897838
		LONG:	-87.658564
PRIMARY:	I-90/94 KENNEDY EXPWY EB	FACES:	NORTHWEST
CROSS:	MILWAUKEE AVE	PLANT #:	IMW882
TAGS:	I-90/94, KENNEDY EXPWY, LOOP RIVER NORTH, NEAR NORTH, ORD	GEOPATH #:	598556

I-90/94 KENNEDY EXPRESSWAY EB INBOUND AT MILWAUKEE AVE FNW 27' X 74'W MASSIVE WALL, HUGE TRAFFIC KENNEDY EXPRESSWAY EB TO RIVER NORTH (AT OHIO ST EXIT), LOOP, WEST LOOP, FUTON MARKET, I-290 AHEAD, SECONDARY MILWAUKEE AVE EB. LANDMARK MEGA WALL





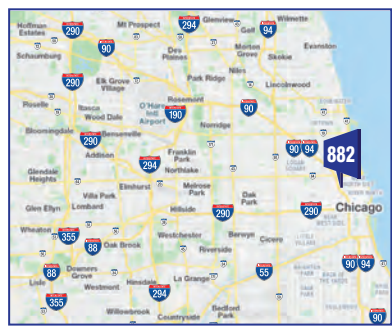
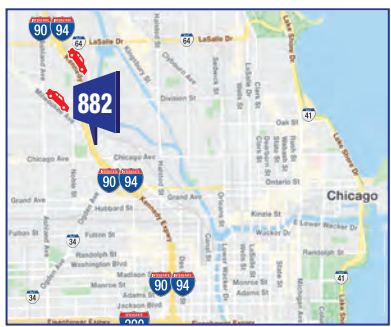
I-90/94 KENNEDY EXPRESSWAY EB INBOUND AT MILWAUKEE AVE FNW 27'X74' LANDMARK WALL IN TO: RIVER NORTH, LOOP, W. LOOP, I-290 AHEAD

IMW882



MEDIA:	LANDMARK VINYL WALLSCAPE	AREA:	60642, RIVER NORTH, LOOP, W. LOOP AHEAD		
DIMENSIONS:	27'H X 74'W	LAT:	41.897838	LONG:	-87.658564
PRIMARY:	I-90/94 KENNEDY EXPWY EB	FACES:	NORTHWEST		
CROSS:	MILWAUKEE AVE	PLANT #:	IMW882		
TAGS:	I-90/94, KENNEDY EXPWY, LOOP RIVER NORTH, NEAR NORTH, ORD	GEOPATH #:	598556		

I-90/94 KENNEDY EXPRESSWAY EB INBOUND AT MILWAUKEE AVE FNW 27' X 74'W MASSIVE WALL, HUGE TRAFFIC KENNEDY EXPRESSWAY EB TO RIVER NORTH (AT OHIO ST EXIT), LOOP, WEST LOOP, FUTON MARKET, I-290 AHEAD, SECONDARY MILWAUKEE AVE EB. LANDMARK MEGA WALL





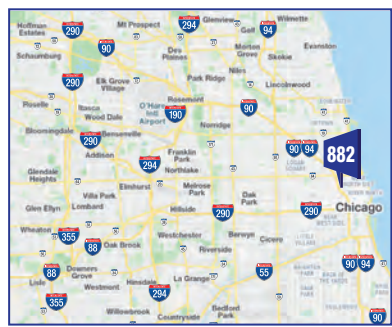
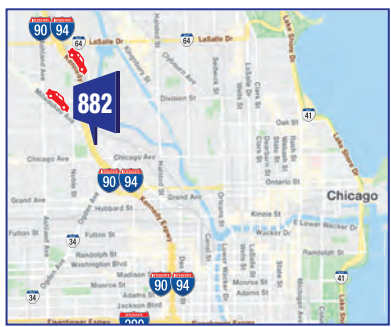
I-90/94 KENNEDY EXPRESSWAY EB INBOUND AT MILWAUKEE AVE FNW 27'X74' LANDMARK WALL IN TO: RIVER NORTH, LOOP, W. LOOP, I-290 AHEAD

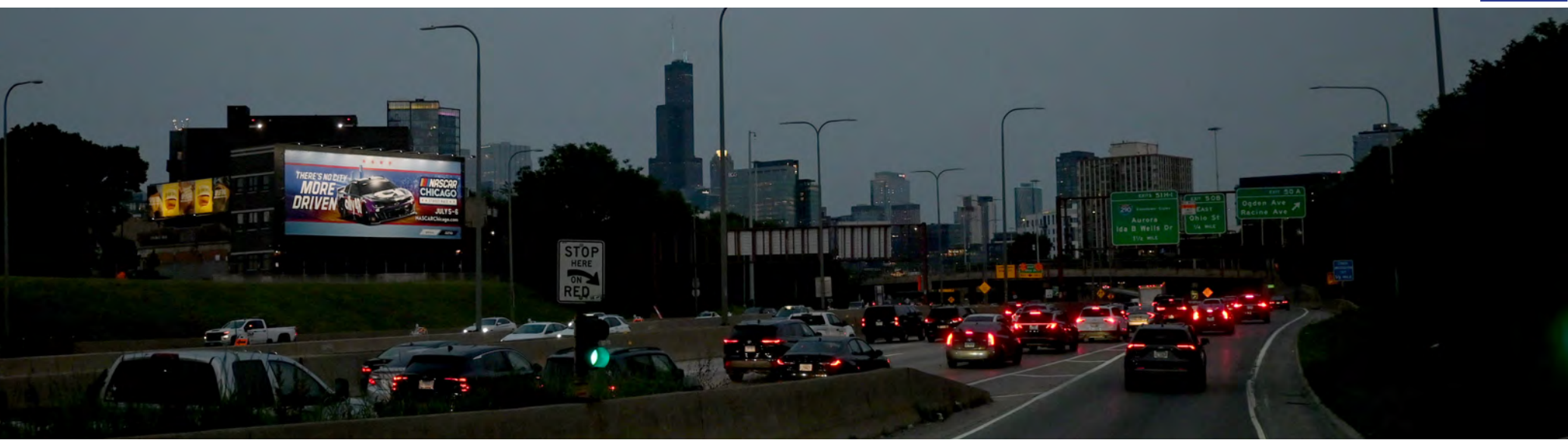
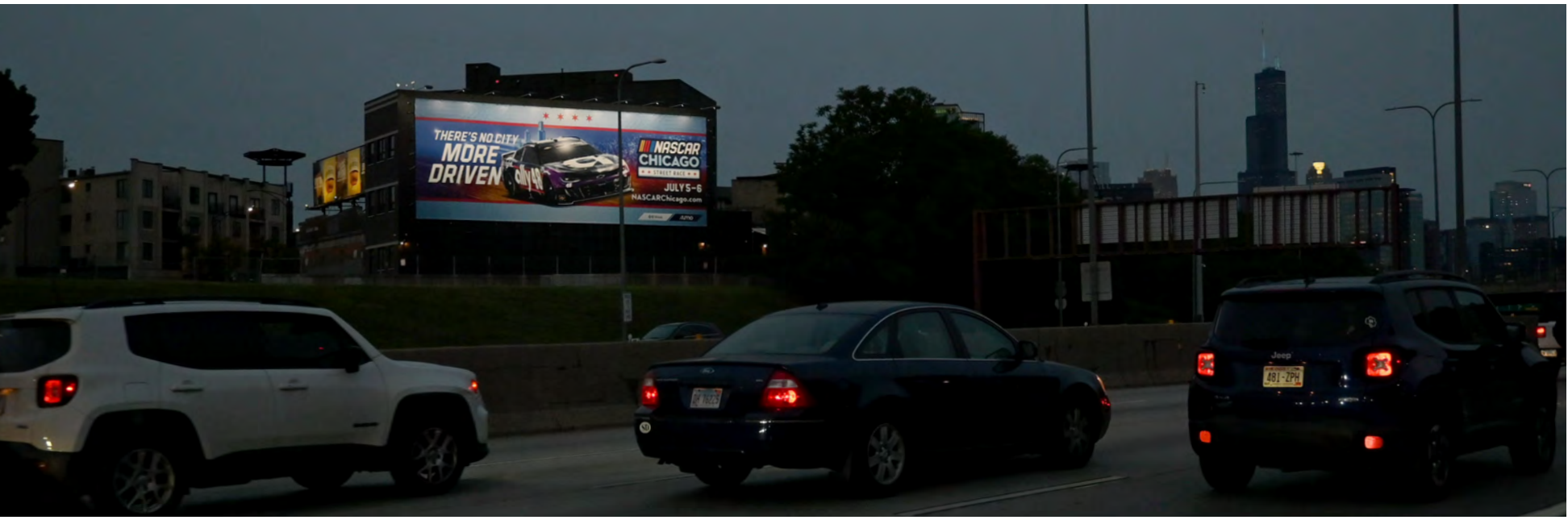
IMW882



MEDIA:	LANDMARK VINYL WALLSCAPE	AREA:	60642, RIVER NORTH, LOOP, W. LOOP AHEAD
DIMENSIONS:	27'H X 74'W	LAT:	41.897838
PRIMARY:	I-90/94 KENNEDY EXPWY EB	LONG:	-87.658564
CROSS:	MILWAUKEE AVE	FACES:	NORTHWEST
TAGS:	I-90/94, KENNEDY EXPWY, LOOP RIVER NORTH, NEAR NORTH, ORD	PLANT #:	IMW882
		GEOPATH #:	598556

I-90/94 KENNEDY EXPRESSWAY EB INBOUND AT MILWAUKEE AVE FNW 27' X 74'W MASSIVE WALL, HUGE TRAFFIC KENNEDY EXPRESSWAY EB TO RIVER NORTH (AT OHIO ST EXIT), LOOP, WEST LOOP, FUTON MARKET, I-290 AHEAD, SECONDARY MILWAUKEE AVE EB. LANDMARK MEGA WALL





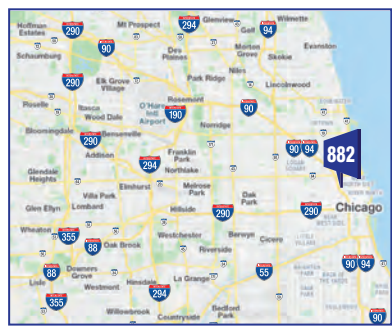
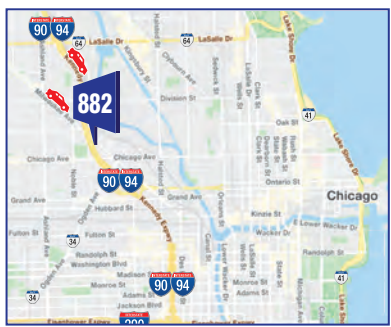
I-90/94 KENNEDY EXPRESSWAY EB INBOUND AT MILWAUKEE AVE FNW 27'X74' LANDMARK WALL IN TO: RIVER NORTH, LOOP, W. LOOP, I-290 AHEAD

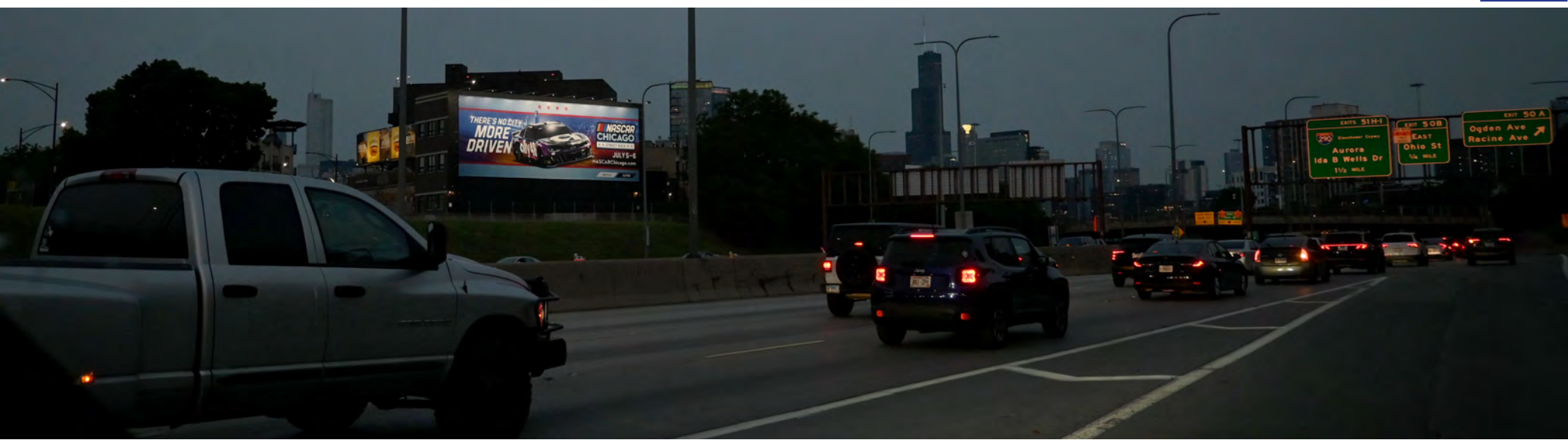
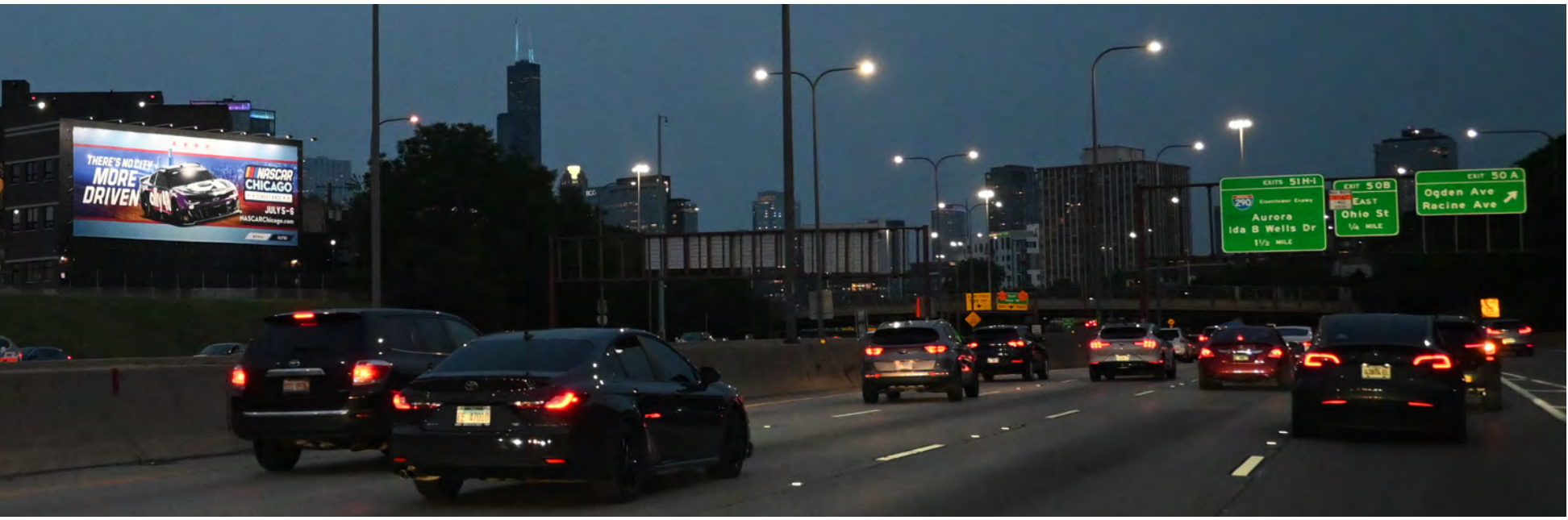
IMW882



MEDIA:	LANDMARK VINYL WALLSCAPE	AREA:	60642, RIVER NORTH, LOOP, W. LOOP AHEAD
DIMENSIONS:	27'H X 74'W	LAT:	41.897838
		LONG:	-87.658564
PRIMARY:	I-90/94 KENNEDY EXPWY EB	FACES:	NORTHWEST
CROSS:	MILWAUKEE AVE	PLANT #:	IMW882
TAGS:	I-90/94, KENNEDY EXPWY, LOOP RIVER NORTH, NEAR NORTH, ORD	GEOPATH #:	598556

I-90/94 KENNEDY EXPRESSWAY EB INBOUND AT MILWAUKEE AVE FNW 27' X 74'W MASSIVE WALL, HUGE TRAFFIC KENNEDY EXPRESSWAY EB TO RIVER NORTH (AT OHIO ST EXIT), LOOP, WEST LOOP, FUTON MARKET, I-290 AHEAD, SECONDARY MILWAUKEE AVE EB. LANDMARK MEGA WALL





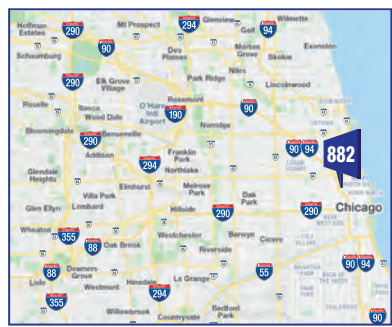
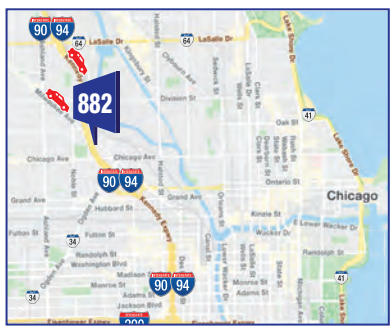
I-90/94 KENNEDY EXPRESSWAY EB INBOUND AT MILWAUKEE AVE FNW 27'X74' LANDMARK WALL IN TO: RIVER NORTH, LOOP, W. LOOP, I-290 AHEAD

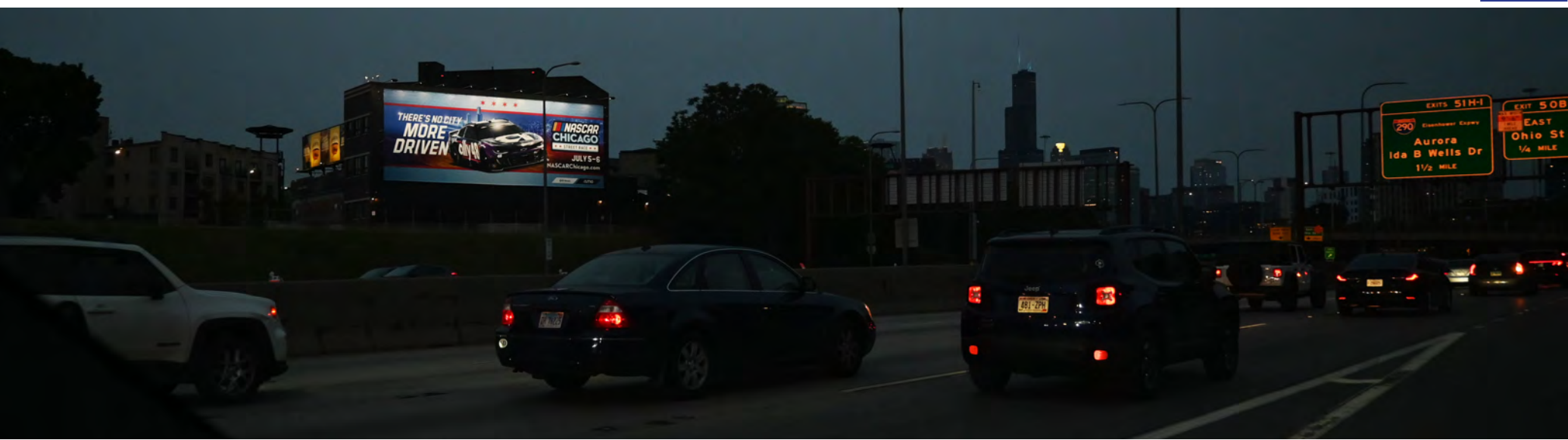
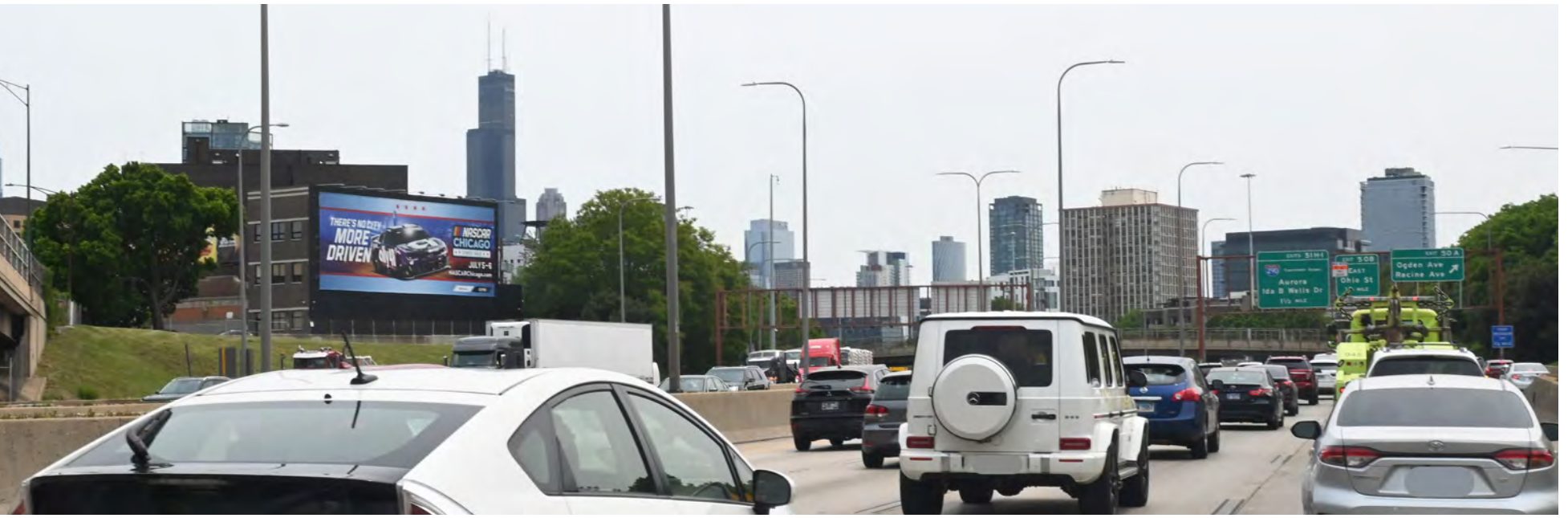
IMW882



MEDIA:	LANDMARK VINYL WALLSCAPE	AREA:	60642, RIVER NORTH, LOOP, W. LOOP AHEAD
DIMENSIONS:	27'H X 74'W	LAT:	41.897838
		LONG:	-87.658564
PRIMARY:	I-90/94 KENNEDY EXPWY EB	FACES:	NORTHWEST
CROSS:	MILWAUKEE AVE	PLANT #:	IMW882
TAGS:	I-90/94, KENNEDY EXPWY, LOOP RIVER NORTH, NEAR NORTH, ORD	GEOPATH #:	598556

I-90/94 KENNEDY EXPRESSWAY EB INBOUND AT MILWAUKEE AVE FNW 27' X 74'W MASSIVE WALL, HUGE TRAFFIC KENNEDY EXPRESSWAY EB TO RIVER NORTH (AT OHIO ST EXIT), LOOP, WEST LOOP, FUTON MARKET, I-290 AHEAD, SECONDARY MILWAUKEE AVE EB. LANDMARK MEGA WALL





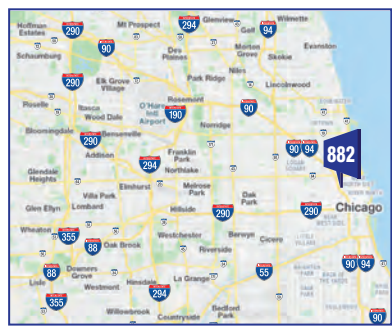
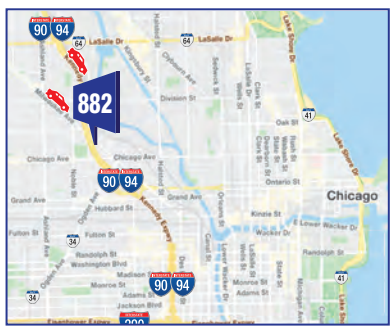
I-90/94 KENNEDY EXPRESSWAY EB INBOUND AT MILWAUKEE AVE FNW 27'X74' LANDMARK WALL IN TO: RIVER NORTH, LOOP, W. LOOP, I-290 AHEAD

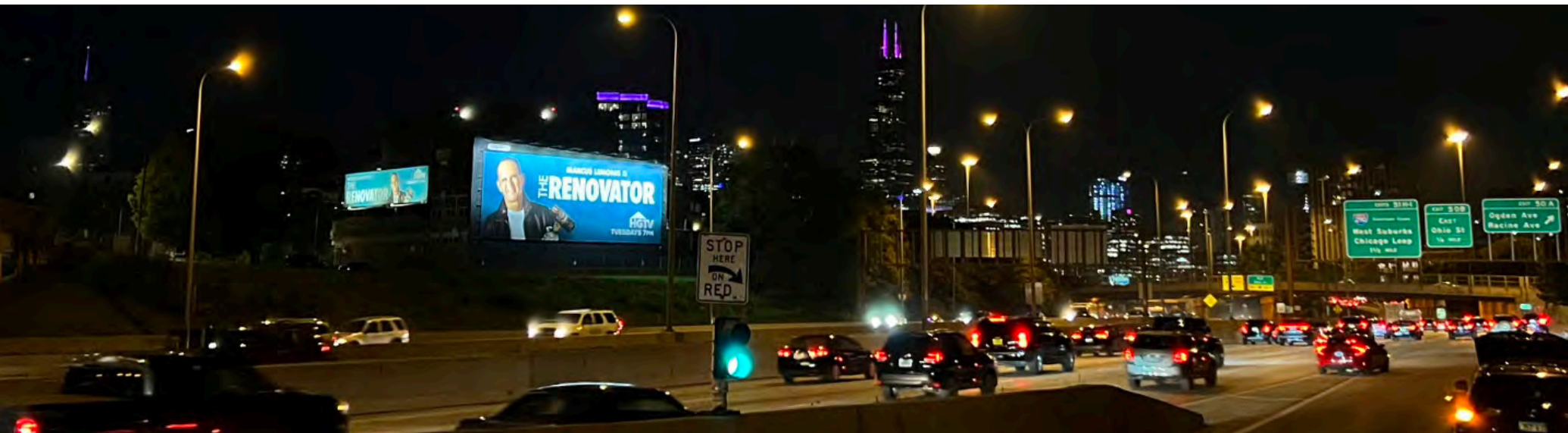
IMW882



MEDIA:	LANDMARK VINYL WALLSCAPE	AREA:	60642, RIVER NORTH, LOOP, W. LOOP AHEAD		
DIMENSIONS:	27'H X 74'W	LAT:	41.897838	LONG:	-87.658564
PRIMARY:	I-90/94 KENNEDY EXPWY EB	FACES:	NORTHWEST		
CROSS:	MILWAUKEE AVE	PLANT #:	IMW882		
TAGS:	I-90/94, KENNEDY EXPWY, LOOP RIVER NORTH, NEAR NORTH, ORD	GEOPATH #:	598556		

I-90/94 KENNEDY EXPRESSWAY EB INBOUND AT MILWAUKEE AVE FNW 27' X 74' MASSIVE WALL, HUGE TRAFFIC KENNEDY EXPRESSWAY EB TO RIVER NORTH (AT OHIO ST EXIT), LOOP, WEST LOOP, FUTON MARKET, I-290 AHEAD, SECONDARY MILWAUKEE AVE EB. LANDMARK MEGA WALL





I-90/94 KENNEDY EXPRESSWAY EB INBOUND AT MILWAUKEE AVE FNW 27'X74' LANDMARK WALL IN TO: RIVER NORTH, LOOP, W. LOOP, I-290 AHEAD

IMW882



MEDIA:	LANDMARK VINYL WALLSCAPE	AREA:	60642, RIVER NORTH, LOOP, W. LOOP AHEAD
DIMENSIONS:	27'H X 74'W	LAT:	41.897838
		LONG:	-87.658564
PRIMARY:	I-90/94 KENNEDY EXPWY EB	FACES:	NORTHWEST
CROSS:	MILWAUKEE AVE	PLANT #:	IMW882
TAGS:	I-90/94, KENNEDY EXPWY, LOOP RIVER NORTH, NEAR NORTH, ORD	GEOPATH #:	598556

I-90/94 KENNEDY EXPRESSWAY EB INBOUND AT MILWAUKEE AVE FNW 27'H X 74'W MASSIVE WALL, HUGE TRAFFIC KENNEDY EXPRESSWAY EB TO RIVER NORTH (AT OHIO ST EXIT), LOOP, WEST LOOP, FUTON MARKET, I-290 AHEAD, SECONDARY MILWAUKEE AVE EB. LANDMARK MEGA WALL

