

EXPRESSWAY VINYL BULLETIN



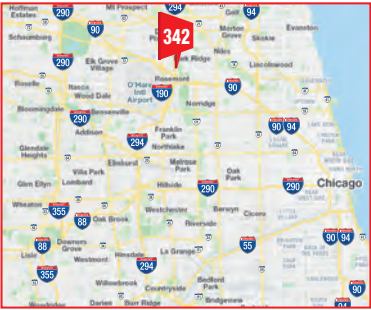
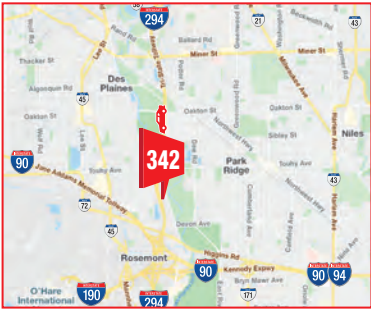
I-294 NORTH TRI-STATE TOLL SB AT TOUHY TOLL PLAZA FN 20'H X 60'W TRAFFIC INBOUND TO I-90/94 KENNEDY, I-190 ORD, I-90 NW SUBURBS AHEAD

IM342



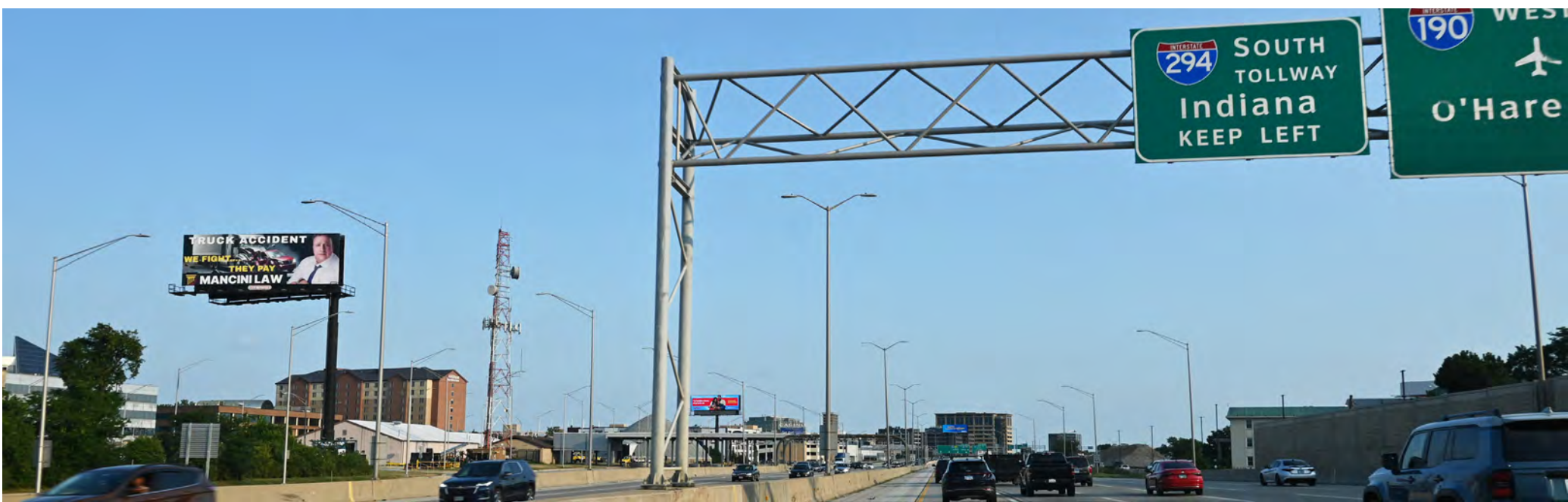
TYPE:	EXPRESSWAY VINYL BULLETIN	CITY/STATE/ZIP:	DES PLAINES, IL 60018
DIMENSIONS:	20'H X 60'W	LAT:	42.002838
		LONG:	-87.866829
PRIMARY PATH:	I-294 NORTH TRI-STATE TOLLWAY SB	FACES:	SOUTH
CROSS PATH:	TOUHY TOLL PLAZA	PLANT #:	IM342
TAGS:	I-294 NORTH TRI-STATE TOLLWAY, ORD, RIVERS CASINO	GEOPATH #:	30498047

I-294 NORTH TRI-STATE TOLL SB AT TOUHY TOLL PLAZA FN 20'H X 60'W TRAFFIC FROM NORTH SUBURBS, INBOUND TO I-190 ORD OHARE AIRPORT, I-9094 CHICAGO, I-90 NW SUBURBS INTERCHANGE AHEAD





EXPRESSWAY VINYL BULLE-



I-294 NORTH TRI-STATE TOLL SB AT TOUHY TOLL PLAZA FN 20'H X 60'W TRAFFIC INBOUND TO I-90/94 KENNEDY, I-190 ORD, I-90 NW SUBURBS AHEAD

IM342



TYPE:	EXPRESSWAY VINYL BULLETIN	CITY/STATE/ZIP:	DES PLAINES, IL 60018
DIMENSIONS:	20'H X 60'W	LAT:	42.002838
		LONG:	-87.866829
PRIMARY PATH:	I-294 NORTH TRI-STATE TOLLWAY SB	FACES:	SOUTH
CROSS PATH:	TOUHY TOLL PLAZA	PLANT #:	IM342
TAGS:	I-294 NORTH TRI-STATE TOLLWAY, ORD, RIVERS CASINO	GEOPATH #:	30498047

I-294 NORTH TRI-STATE TOLL SB AT TOUHY TOLL PLAZA FN 20'H X 60'W TRAFFIC FROM NORTH SUBURBS, INBOUND TO I-190 ORD OHARE AIRPORT, I-9094 CHICAGO, I-90 NW SUBURBS INTERCHANGE AHEAD

