

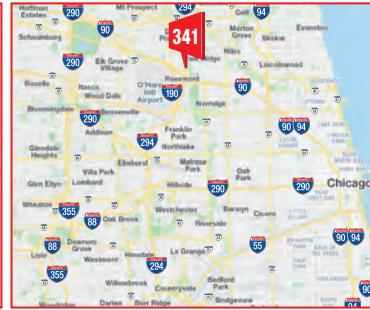
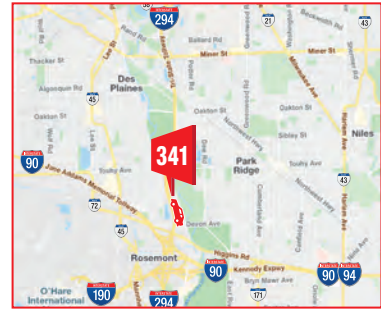
I-294 NORTH TRI-STATE TOLL NB AT TOUHY TOLL PLAZA FS 20'H X 60'W CENTER RHR TRAFFIC NB TO NORTH SUBURBS, AT EXIT FOR RIVERS CASINO

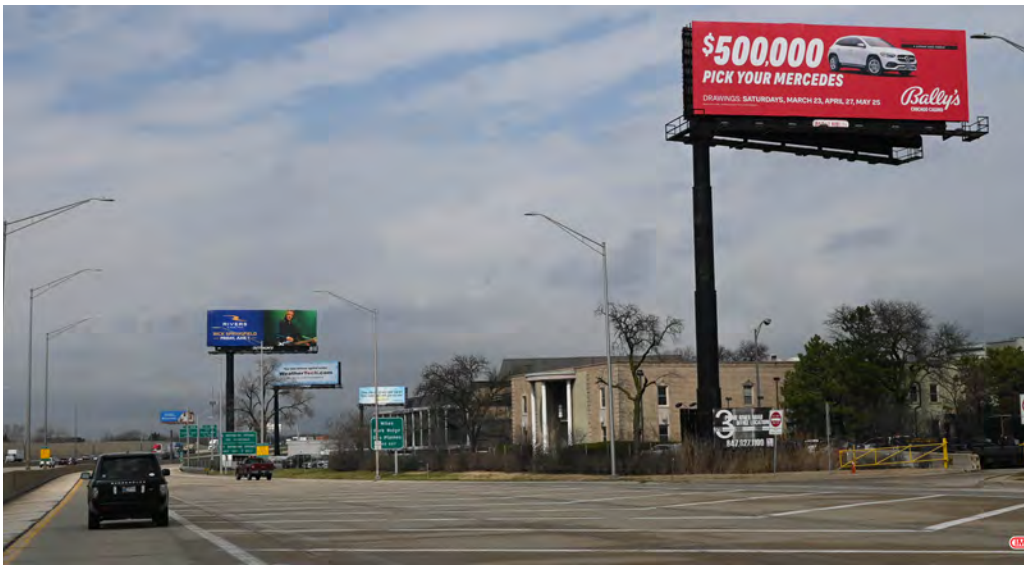
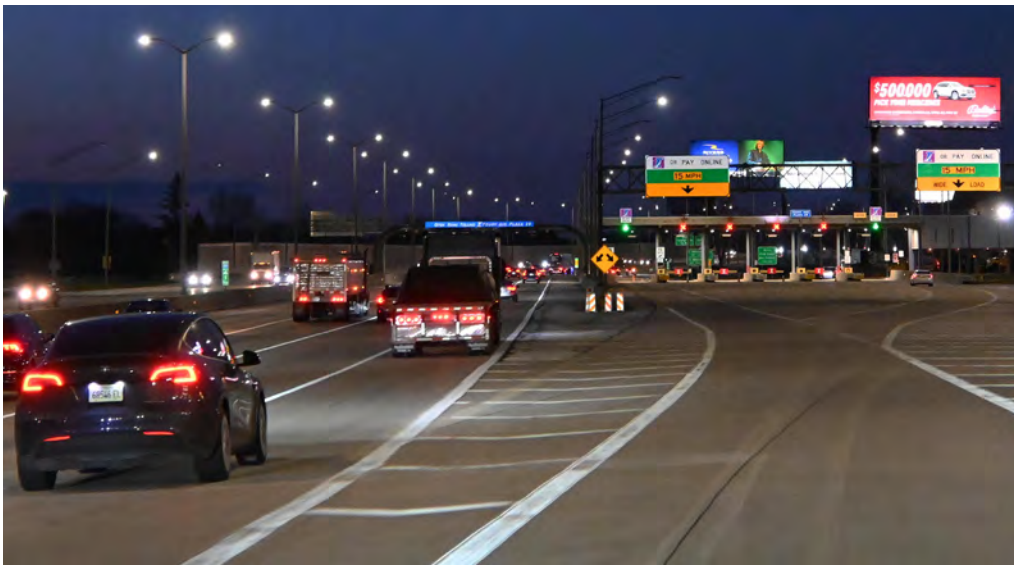
IM341



TYPE:	EXPRESSWAY VINYL BULLETIN	CITY/STATE/ZIP:	DES PLAINES, IL 60018
DIMENSIONS:	20'H X 60'W	LAT:	42.002798
		LONG:	-87.866811
PRIMARY PATH:	I-294 NORTH TRI-STATE TOLLWAY NB	FACES:	SOUTH
CROSS PATH:	TOUHY TOLL PLAZA	PLANT #:	IM341
TAGS:	I-294 NORTH TRI-STATE TOLLWAY, ORD, RIVERS CASINO	GEOPATH #:	30498046

I-294 NORTH TRI-STATE TOLL NB AT TOUHY TOLL PLAZA FS 20'H X 60'W CENTER RHR TRAFFIC NB TO NORTH SUBURBS, AT EXIT FOR RIVERS CASINO DES PLAINES





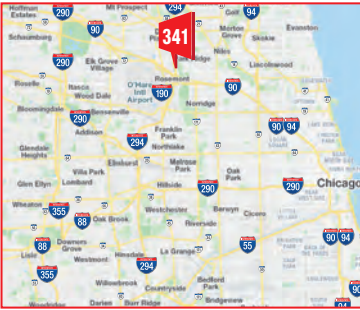
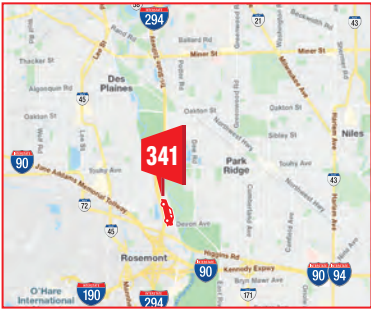
I-294 NORTH TRI-STATE TOLL NB AT TOUHY TOLL PLAZA FS 20'H X 60'W CENTER RHR TRAFFIC NB TO NORTH SUBURBS, AT EXIT FOR RIVERS CASINO

IM341



TYPE:	EXPRESSWAY VINYL BULLETIN	CITY/STATE/ZIP:	DES PLAINES, IL 60018
DIMENSIONS:	20'H X 60'W	LAT:	42.002798
		LONG:	-87.866811
PRIMARY PATH:	I-294 NORTH TRI-STATE TOLLWAY NB	FACES:	SOUTH
CROSS PATH:	TOUHY TOLL PLAZA	PLANT #:	IM341
TAGS:	I-294 NORTH TRI-STATE TOLLWAY, ORD, RIVERS CASINO	GEOPATH #:	30498046

I-294 NORTH TRI-STATE TOLL NB AT TOUHY TOLL PLAZA FS 20'H X 60'W CENTER RHR TRAFFIC NB TO NORTH SUBURBS, AT EXIT FOR RIVERS CASINO DES PLAINES





I-294 NORTH TRI-STATE TOLL NB AT TOUHY TOLL PLAZA FS 20'H X 60'W CENTER RHR TRAFFIC NB TO NORTH SUBURBS, AT EXIT FOR RIVERS CASINO

IM341



TYPE:	EXPRESSWAY VINYL BULLETIN	CITY/STATE/ZIP:	DES PLAINES, IL 60018
DIMENSIONS:	20'H X 60'W	LAT:	42.002798
		LONG:	-87.866811
PRIMARY PATH:	I-294 NORTH TRI-STATE TOLLWAY NB	FACES:	SOUTH
CROSS PATH:	TOUHY TOLL PLAZA	PLANT #:	IM341
TAGS:	I-294 NORTH TRI-STATE TOLLWAY, ORD, RIVERS CASINO	GEOPATH #:	30498046

I-294 NORTH TRI-STATE TOLL NB AT TOUHY TOLL PLAZA FS 20'H X 60'W CENTER RHR TRAFFIC NB TO NORTH SUBURBS, AT EXIT FOR RIVERS CASINO DES PLAINES

