



EXPRESSWAY VINYL BULLETIN

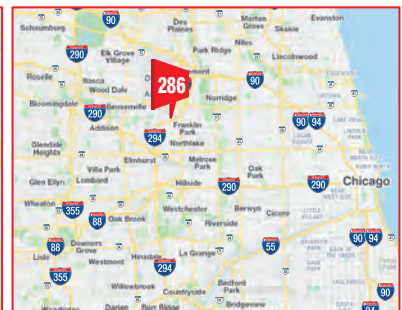
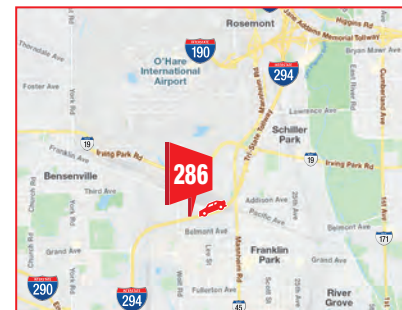


I-294 TRI-STATE TOLL SB N/O WOLF RD FE 20'H X 60'W RHR TRAFFIC FROM ROSEMONT, ORD O'HARE AIRPORT SB TO I-290, I-88, NORTH AVE.

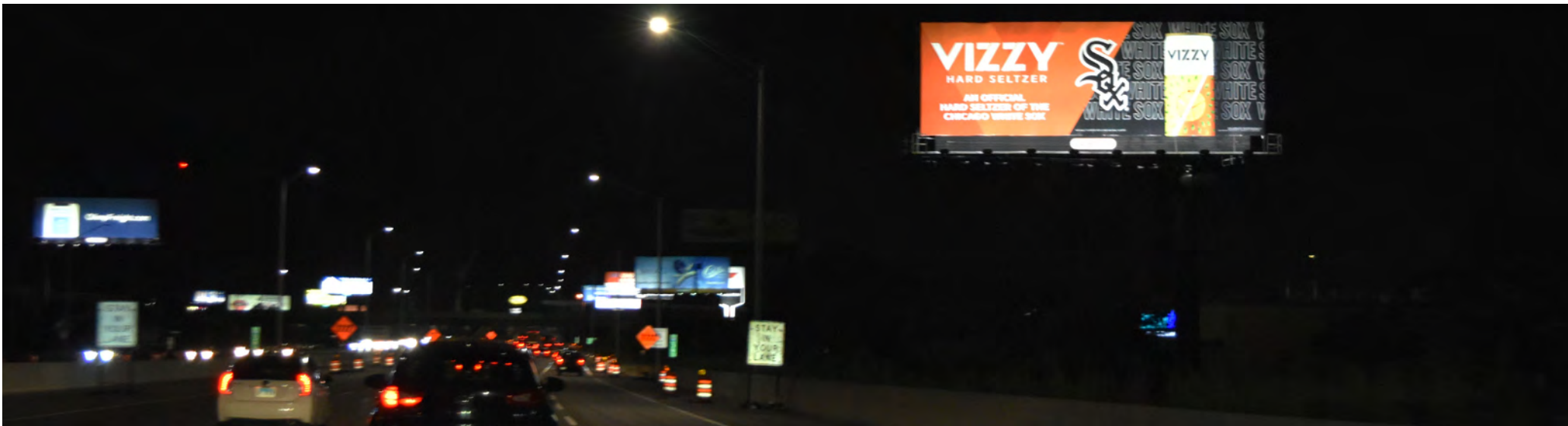
IM286



MEDIA:	VINYL BULLETIN	CITY / ST / ZIP:	FRANKLIN PARK, IL 60131
DIMENSIONS:	20'H X 60'W	LAT: 41.939777	LONG: -87.901288
PRIMARY:	I-294 TRI-STATE TOLLWAY SB	FACES:	EAST
CROSS:	N/O WOLF RD	PLANT #:	IM286
INTERSTATE(S):	I-294 TRI-STATE TOLLWAY	GEOPATH #:	30498051



I-294 TRI-STATE TOLL SB N/O WOLF RD FE 20'H X 60'W RHR TRAFFIC FROM ROSEMONT, ORD O'HARE AIRPORT SB TO I-290, NORTH AVE ELMHURST AHEAD

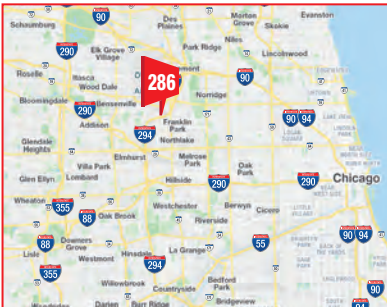
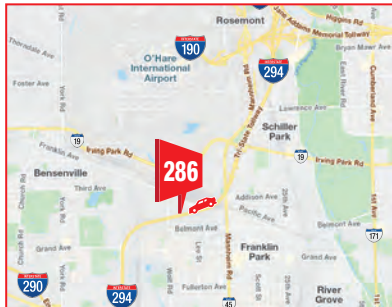


I-294 TRI-STATE TOLL SB N/O WOLF RD FE 20'H X 60'W RHR TRAFFIC FROM ROSEMONT, ORD O'HARE AIRPORT SB TO I-290, I-88, NORTH AVE.

IM286



MEDIA:	VINYL BULLETIN	CITY / ST / ZIP:	FRANKLIN PARK, IL 60131
DIMENSIONS:	20'H X 60'W	LAT: 41.939777	LONG: -87.901288
PRIMARY:	I-294 TRI-STATE TOLLWAY SB	FACES:	EAST
CROSS:	N/O WOLF RD	PLANT #:	IM286
INTERSTATE(S):	I-294 TRI-STATE TOLLWAY	GEOPATH #:	30498051



I-294 TRI-STATE TOLL SB N/O WOLF RD FE 20'H X 60'W RHR TRAFFIC FROM ROSEMONT, ORD O'HARE AIRPORT SB TO I-290, NORTH AVE ELMHURST AHEAD