

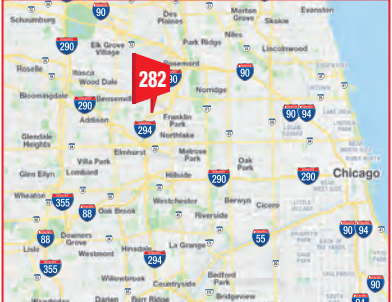
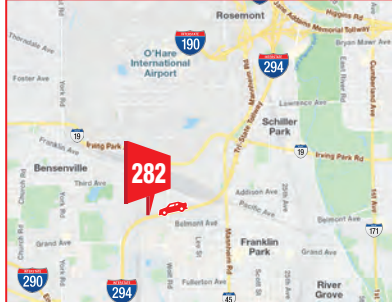


I-294 TRI-STATE TOLL SB S/O WOLF RD FE 20'H X 60'W RHR TRAFFIC FROM ROSEMONT, ORD O'HARE AIRPORT SB TO I-290, I-88, NORTH AVE.

# IM282



<b>TYPE:</b>	EXPRESSWAY VINYL BULLETIN	<b>CITY / ST / ZIP:</b>	FRANKLIN PARK, IL 60131
<b>DIMENSIONS:</b>	20'H X 60'W	<b>LAT:</b> 41.938189	<b>LONG:</b> -87.910898
<b>PRIMARY PATH:</b>	I-294 TRI-STATE TOLLWAY SB	<b>FACES:</b>	EAST
<b>CROSS PATH:</b>	S/O WOLF RD	<b>IMAGE#/GEOPATH:</b>	IM282 / 30498049
<b>TAGS:</b>	I-294 TRI STATE TOLL, ORD	<b>GEOPATH #:</b>	30498049



I-294 TRI-STATE TOLL SB S/O WOLF RD FE 20'H X 60'W RHR TRAFFIC FROM ROSEMONT, ORD O'HARE AIRPORT SB TO I-290, NORTH AVE ELMHURST AHEAD



EXPRESSWAY VINYL BULLETIN

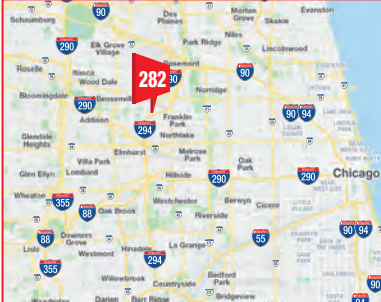
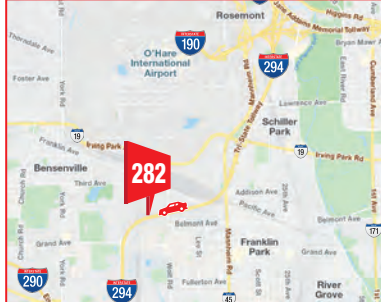


I-294 TRI-STATE TOLL SB S/O WOLF RD FE 20'H X 60'W RHR TRAFFIC FROM ROSEMONT, ORD O'HARE AIRPORT SB TO I-290, I-88, NORTH AVE.

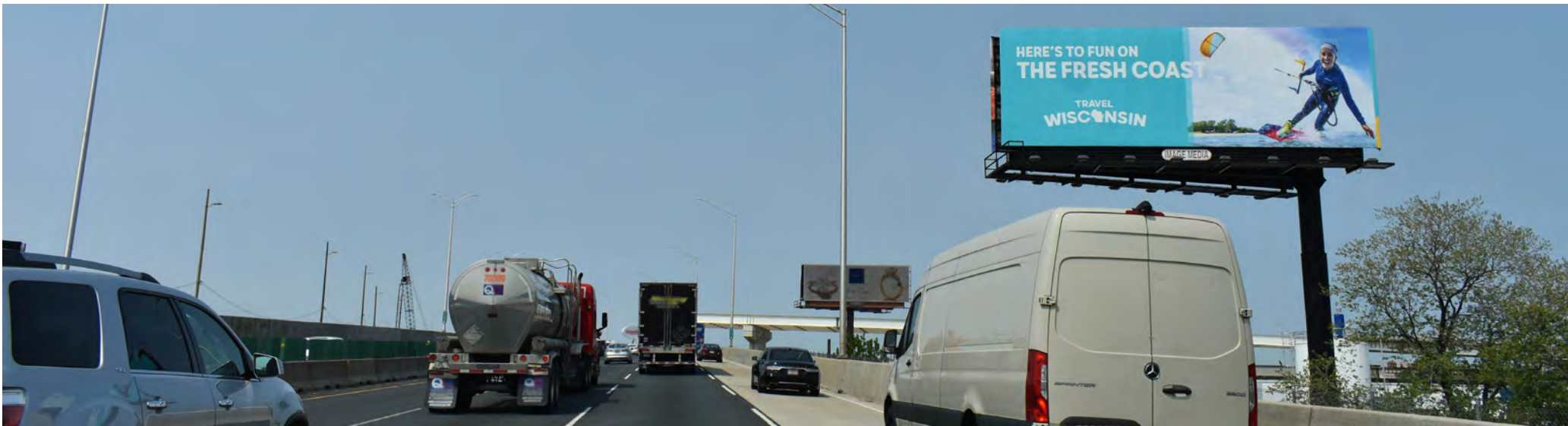
# IM282



<b>TYPE:</b>	EXPRESSWAY VINYL BULLETIN	<b>CITY / ST / ZIP:</b>	FRANKLIN PARK, IL 60131
<b>DIMENSIONS:</b>	20'H X 60'W	<b>LAT:</b> 41.938189	<b>LONG:</b> -87.910898
<b>PRIMARY PATH:</b>	I-294 TRI-STATE TOLLWAY SB	<b>FACES:</b>	EAST
<b>CROSS PATH:</b>	S/O WOLF RD	<b>IMAGE#/GEOPATH:</b>	IM282 / 30498049
<b>TAGS:</b>	I-294 TRI STATE TOLL, ORD	<b>GEOPATH #:</b>	30498049



I-294 TRI-STATE TOLL SB S/O WOLF RD FE 20'H X 60'W RHR TRAFFIC FROM ROSEMONT, ORD O'HARE AIRPORT SB TO I-290, NORTH AVE ELMHURST AHEAD

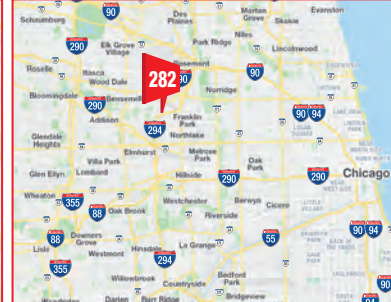
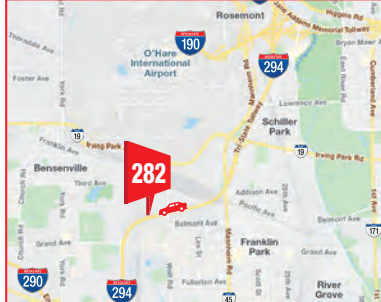


I-294 TRI-STATE TOLL SB S/O WOLF RD FE 20'H X 60'W RHR TRAFFIC FROM ROSEMONT, ORD O'HARE AIRPORT SB TO I-290, I-88, NORTH AVE.

# IM282



<b>TYPE:</b>	EXPRESSWAY VINYL BULLETIN	<b>CITY / ST / ZIP:</b>	FRANKLIN PARK, IL 60131
<b>DIMENSIONS:</b>	20'H X 60'W	<b>LAT:</b> 41.938189	<b>LONG:</b> -87.910898
<b>PRIMARY PATH:</b>	I-294 TRI-STATE TOLLWAY SB	<b>FACES:</b>	EAST
<b>CROSS PATH:</b>	S/O WOLF RD	<b>IMAGE#/GEOPATH:</b>	IM282 / 30498049
<b>TAGS:</b>	I-294 TRI STATE TOLL, ORD	<b>GEOPATH #:</b>	30498049



I-294 TRI-STATE TOLL SB S/O WOLF RD FE 20'H X 60'W RHR TRAFFIC FROM ROSEMONT, ORD O'HARE AIRPORT SB TO I-290, NORTH AVE ELMHURST AHEAD