



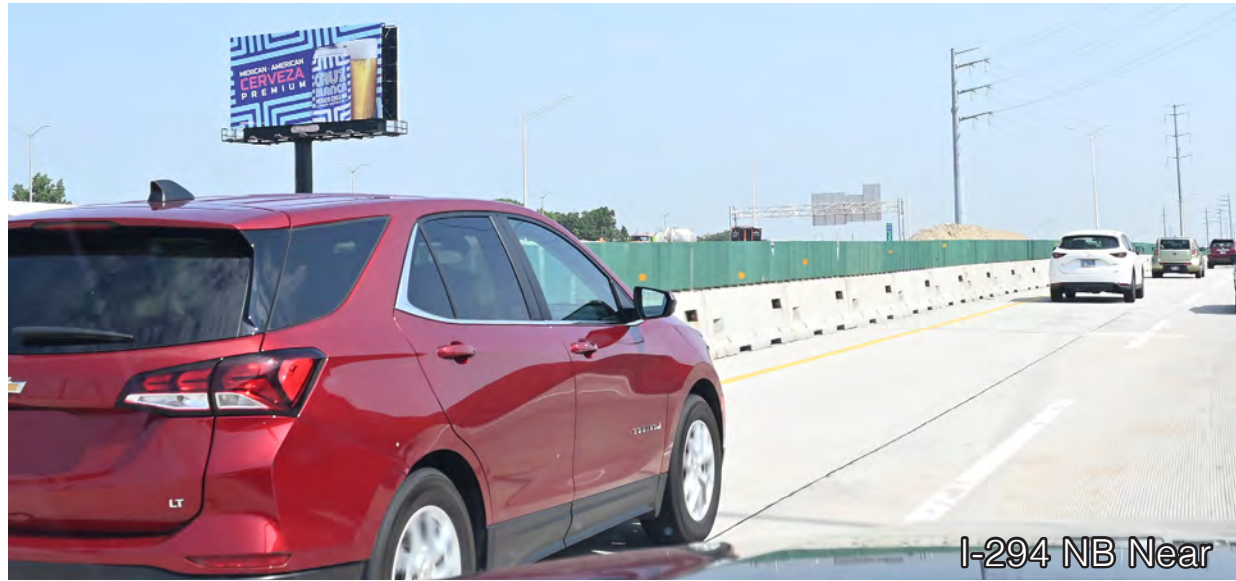
I-290
WB

I-294
NB

LANDMARK BETWEEN 2X EXPWY/TOLL
VINYL BULLETIN



I-290 WB Near



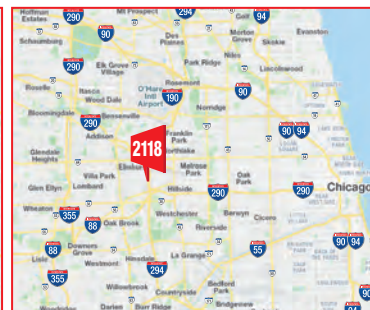
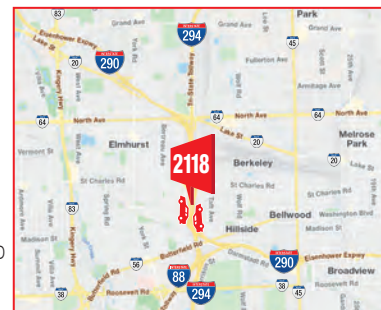
I-294 NB Near

LANDMARK BETWEEN 2X MAJOR ROADWAYS: I-290 EISENHOWER EXPWY WB (RHR) & I-294 TRI STATE TOLL NB (LHR) FS 25'X48'

IM2118



MEDIA:	VINYL BULLETIN	CITY / ST / ZIP:	BERKELEY, IL 60163
DIMENSIONS:	25'H X 48'W	LAT:	41.883222
		LONG:	-87.919985
PRIMARY:	I-294 TRI STATE TOLL NB + I-290 EISENHOWER EXPWY WB	FACES:	SOUTH
CROSS:	AT I-294 / ELECTRIC AVE. (BERKELEY / ELMHURST)	PLANT #:	IM2118
TAGS:	I-294 TRI STATE TOLL, I-290 EISENHOWER EXPWY	GEOPATH #:	282589



WEST SUBURBAN LANDMARK BETWEEN 2X MAJOR CHICAGOLAND ROADWAYS: I-294 TRI-STATE TOLL NORTHBOUND LHR AND I-290 EISENHOWER EXPWY WESTBOUND RHR FS 25'H X 48'W AT ELECTRIC AVE. BERKELEY, IL. VICINITY: ELMHURST, OAK BROOK, HINSDALE, HILLSIDE, BERKELEY, ORD O'HARE INT'L AIRPORT



I-290 WB

LANDMARK BETWEEN 2X EXPWY/TOLL
VINYL BULLETIN



I-294 NB

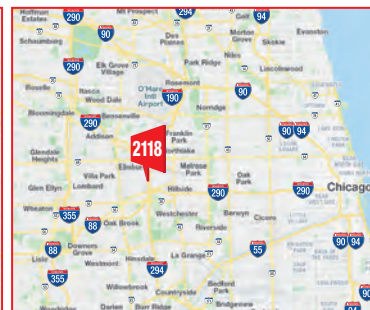
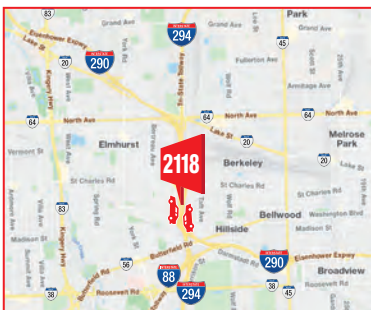
LANDMARK BETWEEN 2X MAJOR ROADWAYS: I-290 EISENHOWER EXPWY WB (RHR) & I-294 TRI STATE TOLL NB (LHR) FS 25'X48'

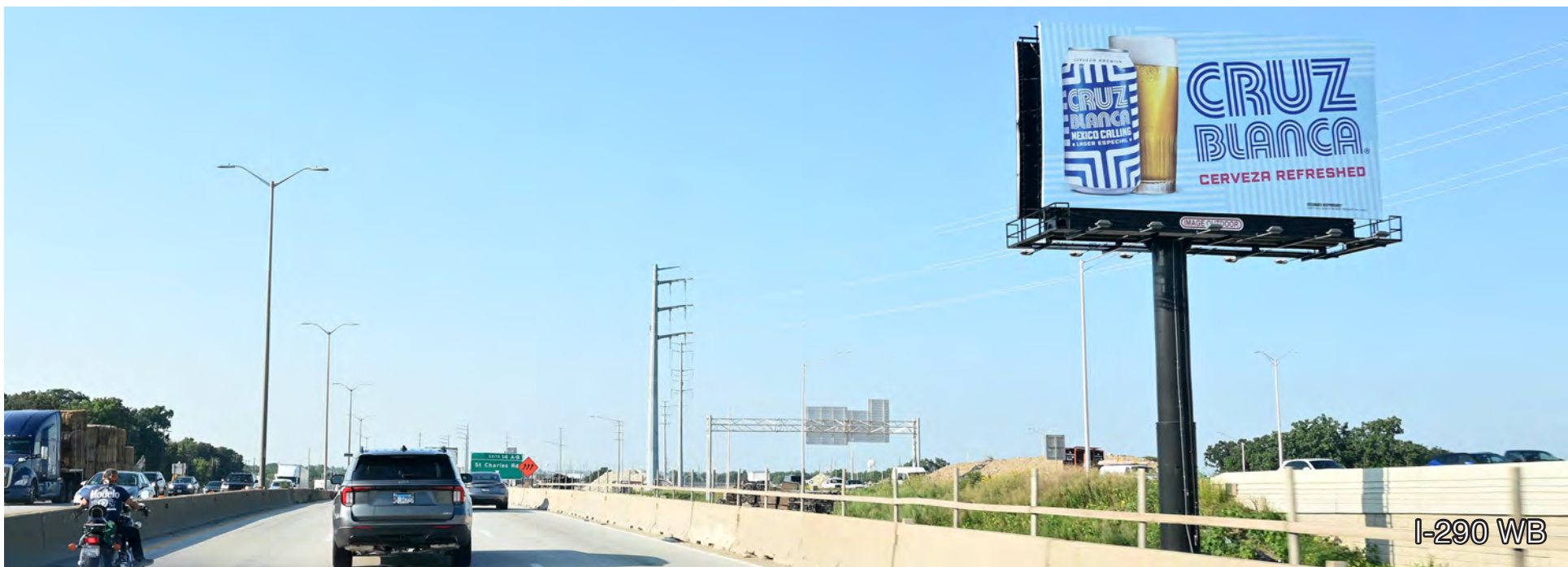
IM2118



MEDIA:	VINYL BULLETIN	CITY / ST / ZIP:	BERKELEY, IL 60163
DIMENSIONS:	25'H X 48'W	LAT:	41.883222
PRIMARY:	I-294 TRI STATE TOLL NB + I-290 EISENHOWER EXPWY WB	LONG:	-87.919985
CROSS:	AT I-294 / ELECTRIC AVE. (BERKELEY / ELMHURST)	FACES:	SOUTH
TAGS:	I-294 TRI STATE TOLL, I-290 EISENHOWER EXPWY	PLANT #:	IM2118
		GEOPATH #:	282589

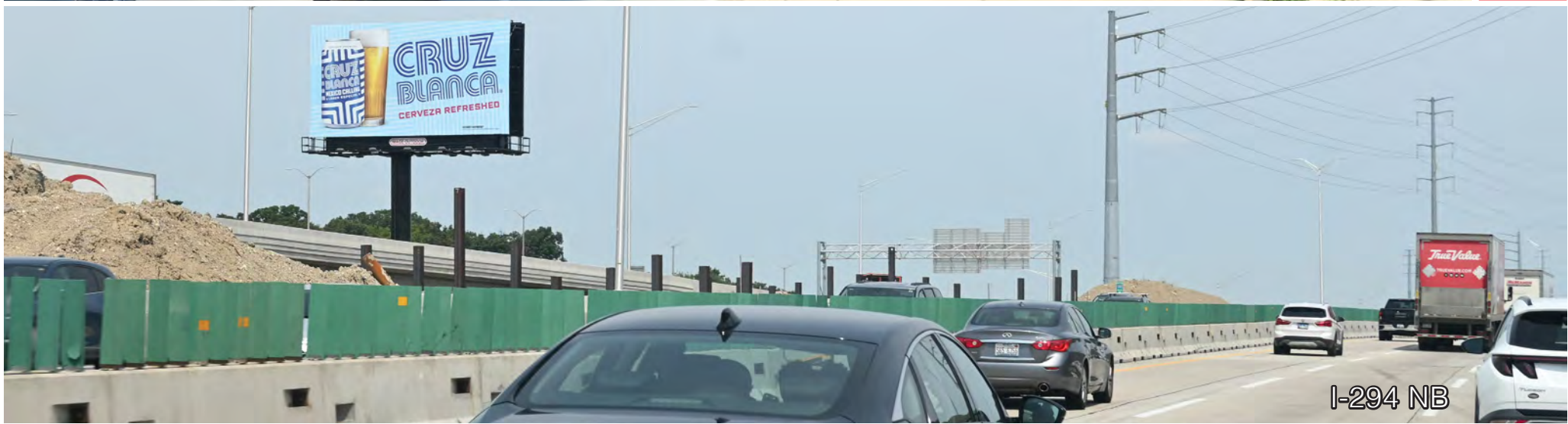
WEST SUBURBAN LANDMARK BETWEEN 2X MAJOR CHICAGOLAND ROADWAYS: I-294 TRI-STATE TOLL NORTHBOUND LHR AND I-290 EISENHOWER EXPWY WESTBOUND RHR FS 25' X 48' W AT ELECTRIC AVE. BERKELEY, IL. VICINITY: ELMHURST, OAK BROOK, HINSDALE, HILLSIDE, BERKELEY, ORD O'HARE INT'L AIRPORT





I-290 WB

LANDMARK BETWEEN 2X EXPWY/TOLL
VINYL BULLETIN



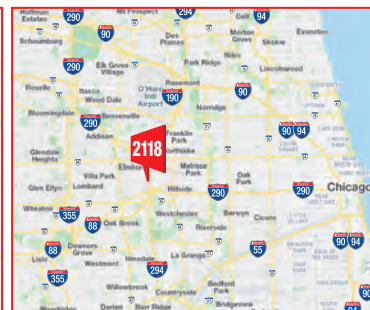
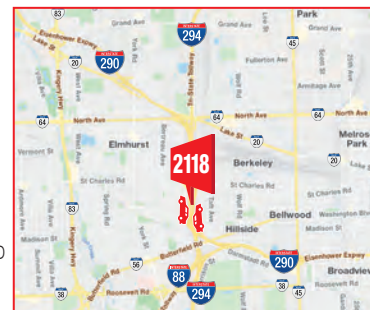
I-294 NB

LANDMARK BETWEEN 2X MAJOR ROADWAYS: I-290 EISENHOWER EXPWY WB (RHR) & I-294 TRI STATE TOLL NB (LHR) FS 25'X48'

IM2118



MEDIA:	VINYL BULLETIN	CITY / ST / ZIP:	BERKELEY, IL 60163
DIMENSIONS:	25'H X 48'W	LAT:	41.883222
PRIMARY:	I-294 TRI STATE TOLL NB + I-290 EISENHOWER EXPWY WB	LONG:	-87.919985
CROSS:	AT I-294 / ELECTRIC AVE. (BERKELEY / ELMHURST)	FACES:	SOUTH
TAGS:	I-294 TRI STATE TOLL, I-290 EISENHOWER EXPWY	PLANT #:	IM2118
		GEOPATH #:	282589



WEST SUBURBAN LANDMARK BETWEEN 2X MAJOR CHICAGOLAND ROADWAYS: I-294 TRI-STATE TOLL NORTHBOUND LHR AND I-290 EISENHOWER EXPWY WESTBOUND RHR FS 25'H X 48'W AT ELECTRIC AVE. BERKELEY, IL. VICINITY: ELMHURST, OAK BROOK, HINSDALE, HILLSIDE, BERKELEY, ORD O'HARE INT'L AIRPORT





I-290 WB

I-294 NB

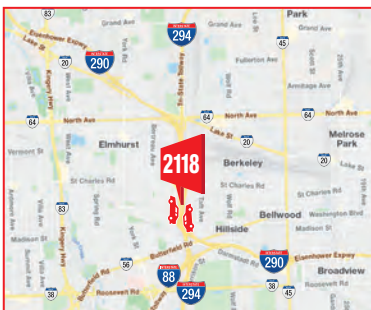
LANDMARK BETWEEN 2X MAJOR ROADWAYS: I-290 EISENHOWER EXPWY WB (RHR) & I-294 TRI STATE TOLL NB (LHR) FS 25'X48'

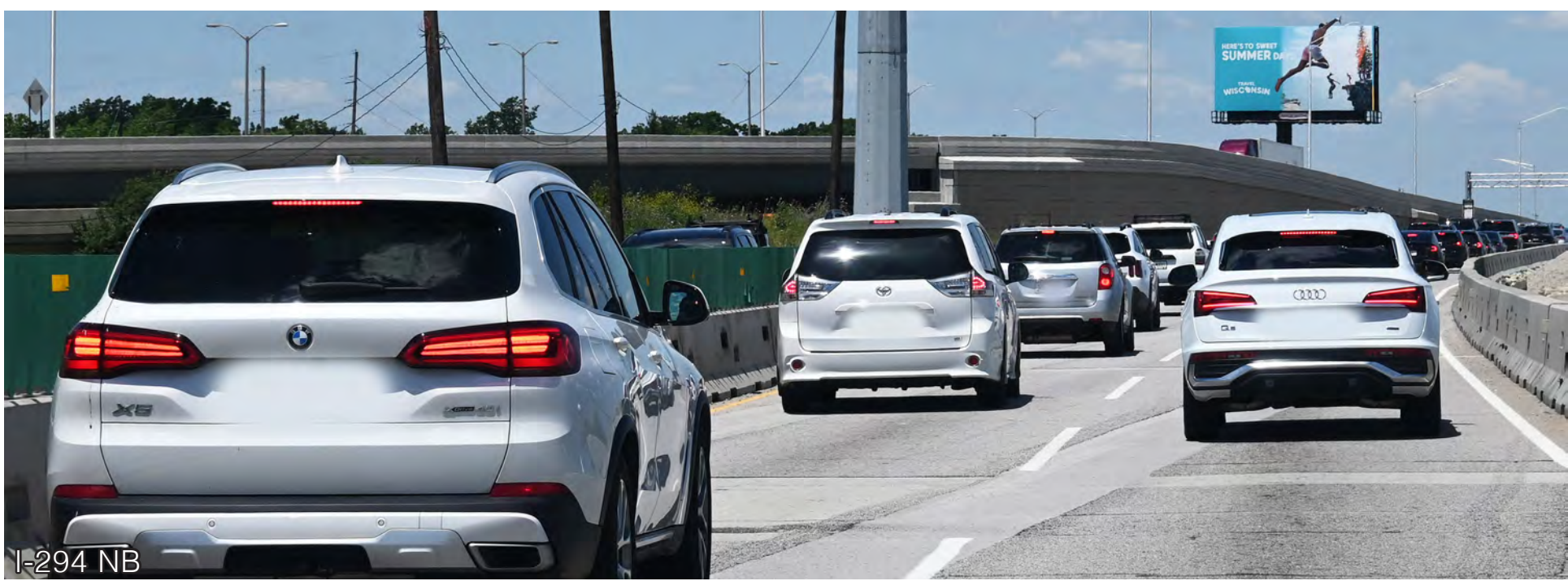
IM2118



MEDIA:	VINYL BULLETIN	CITY / ST / ZIP:	BERKELEY, IL 60163
DIMENSIONS:	25'H X 48'W	LAT:	41.883222
		LONG:	-87.919985
PRIMARY:	I-294 TRI STATE TOLL NB + I-290 EISENHOWER EXPWY WB	FACES:	SOUTH
CROSS:	AT I-294 / ELECTRIC AVE. (BERKELEY / ELMHURST)	PLANT #:	IM2118
TAGS:	I-294 TRI STATE TOLL, I-290 EISENHOWER EXPWY	GEOPATH #:	282589

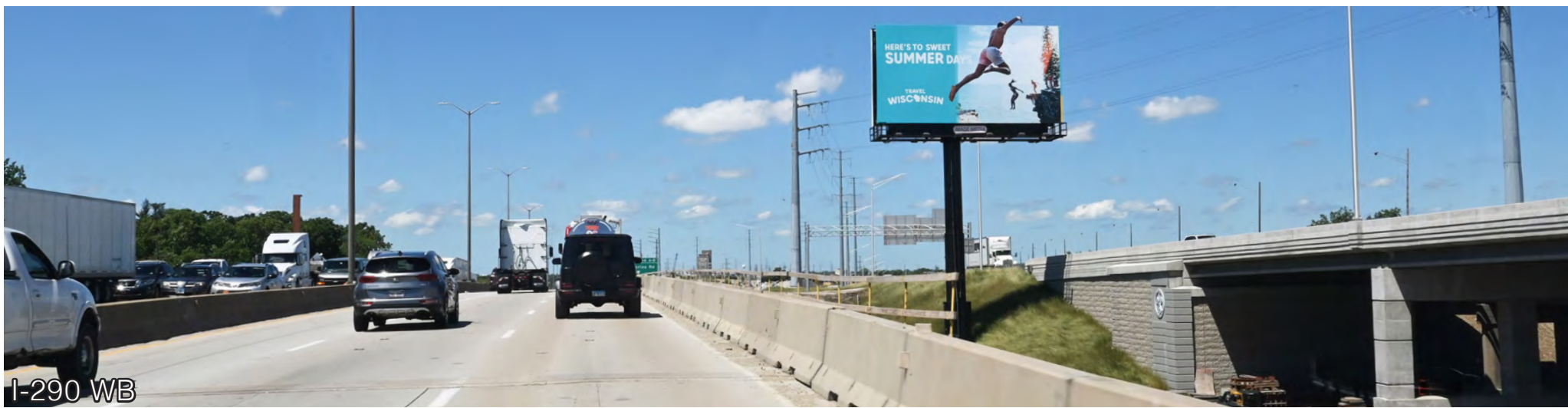
WEST SUBURBAN LANDMARK BETWEEN 2X MAJOR CHICAGOLAND ROADWAYS: I-294 TRI-STATE TOLL NORTHBOUND LHR AND I-290 EISENHOWER EXPWY WESTBOUND RHR FS 25'H X 48'W AT ELECTRIC AVE. BERKELEY, IL. VICINITY: ELMHURST, OAK BROOK, HINSDALE, HILLSIDE, BERKELEY, ORD O'HARE INT'L AIRPORT





I-294 NB

LANDMARK BETWEEN 2X EXPWY/TOLL
VINYL BULLETIN



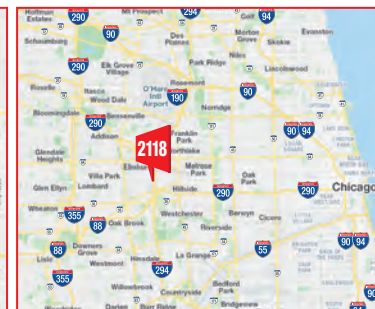
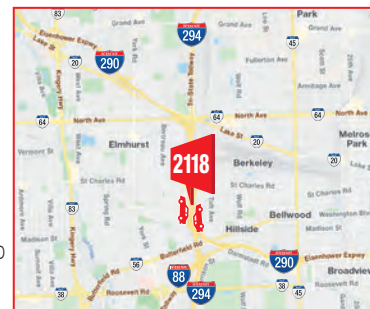
I-290 WB

LANDMARK BETWEEN 2X MAJOR ROADWAYS: I-290 EISENHOWER EXPWY WB (RHR) & I-294 TRI STATE TOLL NB (LHR) FS 25'X48'

IM2118



MEDIA:	VINYL BULLETIN	CITY / ST / ZIP:	BERKELEY, IL 60163
DIMENSIONS:	25'H X 48'W	LAT:	41.883222
		LONG:	-87.919985
PRIMARY:	I-294 TRI STATE TOLL NB + I-290 EISENHOWER EXPWY WB	FACES:	SOUTH
CROSS:	AT I-294 / ELECTRIC AVE. (BERKELEY / ELMHURST)	PLANT #:	IM2118
TAGS:	I-294 TRI STATE TOLL, I-290 EISENHOWER EXPWY	GEOPATH #:	282589



WEST SUBURBAN LANDMARK BETWEEN 2X MAJOR CHICAGOLAND ROADWAYS: I-294 TRI-STATE TOLL NORTHBOUND LHR AND I-290 EISENHOWER EXPWY WESTBOUND RHR FS 25'H X 48'W AT ELECTRIC AVE. BERKELEY, IL. VICINITY: ELMHURST, OAK BROOK, HINSDALE, HILLSIDE, BERKELEY, ORD O'HARE INT'L AIRPORT





I-294 NB

LANDMARK BETWEEN 2X EXPWY/TOLL
VINYL BULLETIN



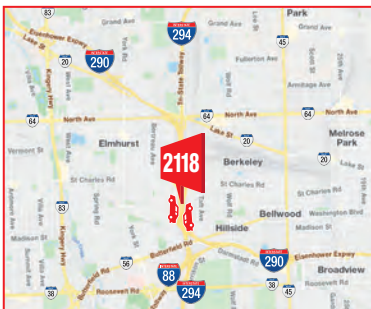
I-290 WB

LANDMARK BETWEEN 2X MAJOR ROADWAYS: I-290 EISENHOWER EXPWY WB (RHR) & I-294 TRI STATE TOLL NB (LHR) FS 25'X48'

IM2118



MEDIA:	VINYL BULLETIN	CITY / ST / ZIP:	BERKELEY, IL 60163
DIMENSIONS:	25'H X 48'W	LAT:	41.883222
		LONG:	-87.919985
PRIMARY:	I-294 TRI STATE TOLL NB + I-290 EISENHOWER EXPWY WB	FACES:	SOUTH
CROSS:	AT I-294 / ELECTRIC AVE. (BERKELEY / ELMHURST)	PLANT #:	IM2118
TAGS:	I-294 TRI STATE TOLL, I-290 EISENHOWER EXPWY	GEOPATH #:	282589



WEST SUBURBAN LANDMARK BETWEEN 2X MAJOR CHICAGOLAND ROADWAYS: I-294 TRI-STATE TOLL NORTHBOUND LHR AND I-290 EISENHOWER EXPWY WESTBOUND RHR FS 25'H X 48'W AT ELECTRIC AVE. BERKELEY, IL. VICINITY: ELMHURST, OAK BROOK, HINSDALE, HILLSIDE, BERKELEY, ORD O'HARE INT'L AIRPORT

