

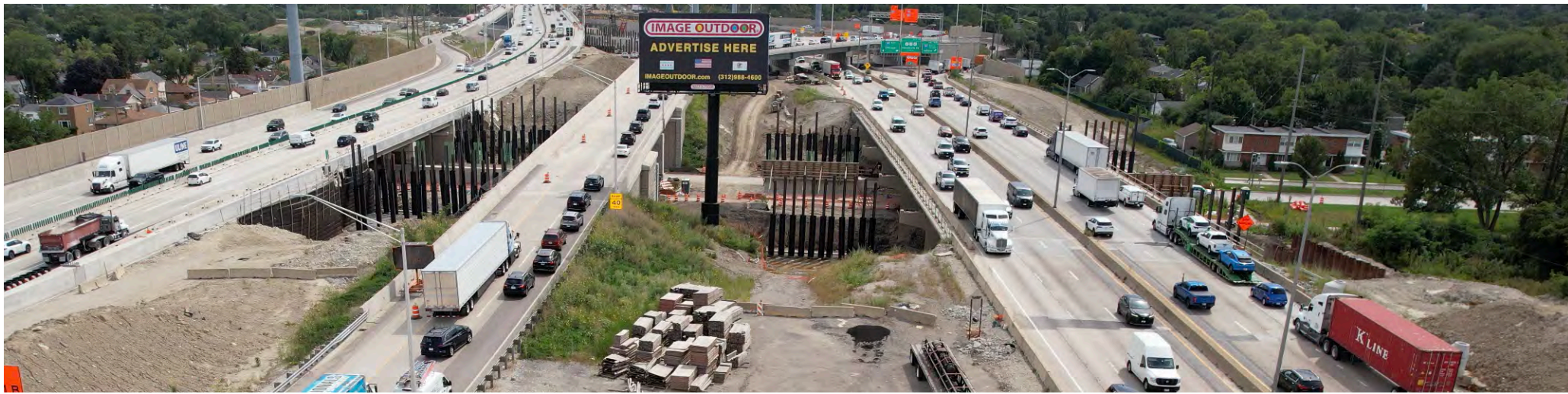


I-294 SB, I-290 EB Exit,
I-88 WB Exit



I-290 EB Near View

LANDMARK BETWEEN 2X EXPWYS
VINYL BULLETIN



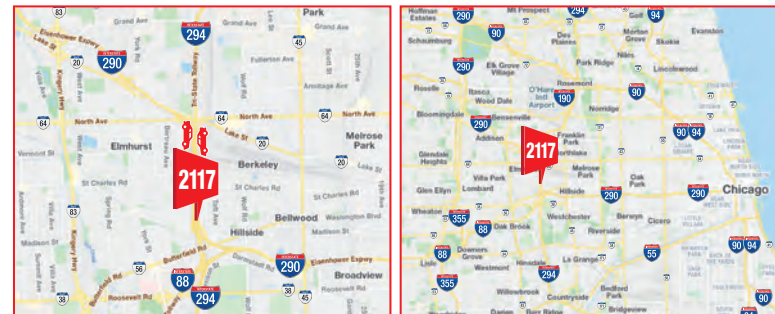
LANDMARK BETWEEN 2X MAJOR ROADWAYS: I-290 EISENHOWER EXPWY EB (LHR) & I-294 TRI STATE TOLL SB (RHR) FN 25'X48'

IM2117



| | | | |
|--------------------|--|---------------------|--------------------|
| MEDIA: | VINYL BULLETIN | CITY/ST/ZIP: | BERKELEY, IL 60163 |
| DIMENSIONS: | 25'H X 48'W | LAT: | 41.883222 |
| | | LONG: | -87.919985 |
| PRIMARY: | I-294 TRI STATE TOLL SB + I-290 EISENHOWER EXPWY EB | FACES: | NORTH |
| CROSS: | AT I-294 / I-88 EXITS / ELECTRIC AVE. (BERKELEY / ELMHURST) | PLANT #: | IM2117 |
| TAGS: | I-294 TRI STATE TOLL, I-290 EISENHOWER EXPWY | GEOPATH #: | 282580 |

WEST SUBURBAN LANDMARK BETWEEN 2X MAJOR CHICAGOLAND ROADWAYS: I-294 TRI-STATE TOLL SOUTHBOUND RHR AND I-290 EISENHOWER EXPWY EASTBOUND LHR JAM AT I-294 / I-88 EXITS FN 25'H X 48'W AT ELECTRIC AVE. BERKELEY, IL. VICINITY: ELMHURST, OAK BROOK, HINSDALE, HILLSIDE, BERKELEY, ORD O'HARE INT'L AIRPORT





I-290 EB View

LANDMARK BETWEEN 2X EXPWYS
VINYL BULLETIN

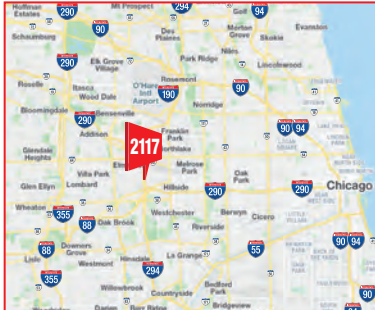
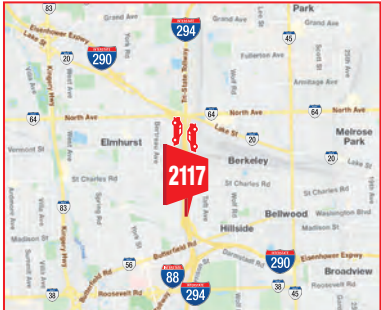
LANDMARK BETWEEN 2X MAJOR ROADWAYS: I-290 EISENHOWER EXPWY EB (LHR) & I-294 TRI STATE TOLL SB (RHR) FN 25'X48'

IM2117



| | | | |
|--------------------|---|---------------------|--------------------|
| MEDIA: | VINYL BULLETIN | CITY/ST/ZIP: | BERKELEY, IL 60163 |
| DIMENSIONS: | 25'H X 48'W | LAT: | 41.883222 |
| | | LONG: | -87.919985 |
| PRIMARY: | I-294 TRI STATE TOLL SB + I-290 EISENHOWER EXPWY EB | FACES: | NORTH |
| CROSS: | AT I-294 / I-88 EXITS / ELECTRIC AVE. (BERKELEY / ELMHURST) | PLANT #: | IM2117 |
| TAGS: | I-294 TRI STATE TOLL, I-290 EISENHOWER EXPWY | GEOPATH #: | 282580 |

WEST SUBURBAN LANDMARK BETWEEN 2X MAJOR CHICAGOLAND ROADWAYS: I-294 TRI-STATE TOLL SOUTHBOUND RHR AND I-290 EISENHOWER EXPWY EASTBOUND LHR JAM AT I-294 / I-88 EXITS FN 25'H X 48'W AT ELECTRIC AVE. BERKELEY, IL. VICINITY: ELMHURST, OAK BROOK, HINSDALE, HILLSDALE, BERKELEY, ORD O'HARE INT'L AIRPORT





I-290 EB View

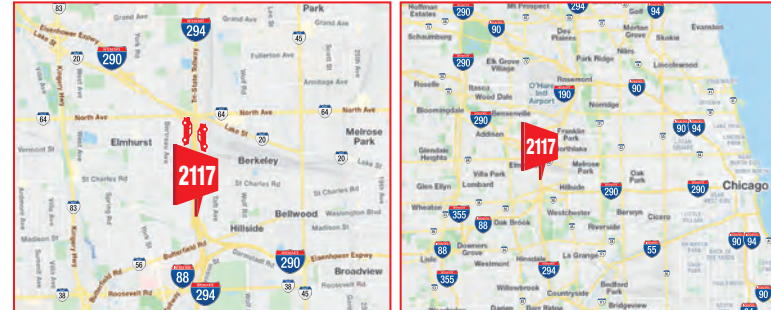
LANDMARK BETWEEN 2X MAJOR ROADWAYS: I-290 EISENHOWER EXPWY EB (LHR) & I-294 TRI STATE TOLL SB (RHR) FN 25'X48'

IM2117



| | | | |
|--------------------|---|-------------------------|--------------------|
| MEDIA: | VINYL BULLETIN | CITY / ST / ZIP: | BERKELEY, IL 60163 |
| DIMENSIONS: | 25'H X 48'W | LAT: | 41.883222 |
| | | LONG: | -87.919985 |
| PRIMARY: | I-294 TRI STATE TOLL SB + I-290 EISENHOWER EXPWY EB | FACES: | NORTH |
| CROSS: | AT I-294 / I-88 EXITS / ELECTRIC AVE. (BERKELEY / ELMHURST) | PLANT #: | IM2117 |
| TAGS: | I-294 TRI STATE TOLL, I-290 EISENHOWER EXPWY | GEOPATH #: | 282580 |

WEST SUBURBAN LANDMARK BETWEEN 2X MAJOR CHICAGOLAND ROADWAYS: I-294 TRI-STATE TOLL SOUTHBOUND RHR AND I-290 EISENHOWER EXPWY EASTBOUND LHR JAM AT I-294 / I-88 EXITS FN 25' X 48' W AT ELECTRIC AVE. BERKELEY, IL. VICINITY: ELMHURST, OAK BROOK, HINSDALE, HILLSDALE, BERKELEY, ORD O'HARE INT'L AIRPORT





LANDMARK BETWEEN 2X EXPWYS
VINYL BULLETIN

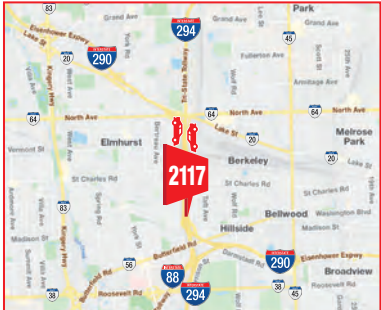
LANDMARK BETWEEN 2X MAJOR ROADWAYS: I-290 EISENHOWER EXPWY EB (LHR) & I-294 TRI STATE TOLL SB (RHR) FN 25'X48'

IM2117



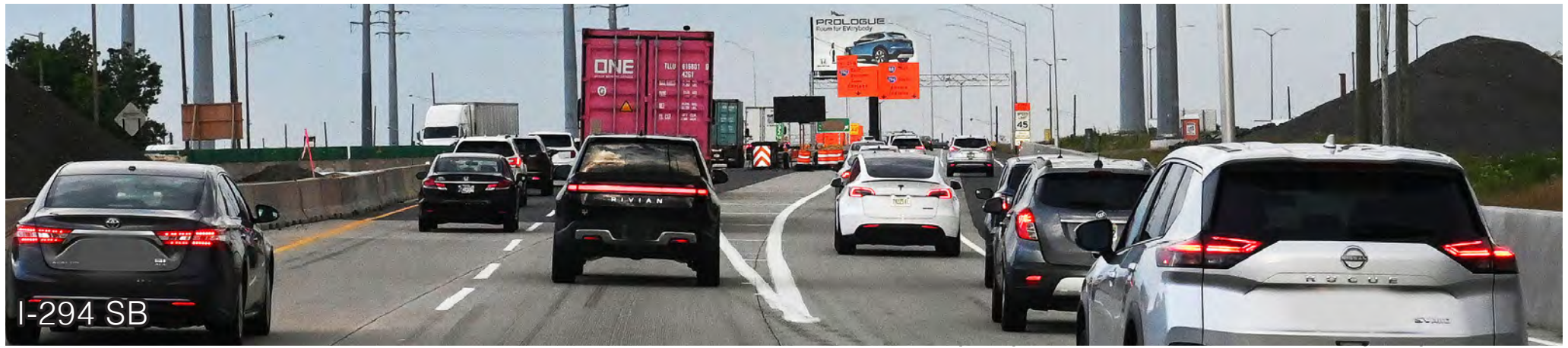
| | | | |
|--------------------|--|---------------------|--------------------|
| MEDIA: | VINYL BULLETIN | CITY/ST/ZIP: | BERKELEY, IL 60163 |
| DIMENSIONS: | 25'H X 48'W | LAT: | 41.883222 |
| | | LONG: | -87.919985 |
| PRIMARY: | I-294 TRI STATE TOLL SB + I-290 EISENHOWER EXPWY EB | FACES: | NORTH |
| CROSS: | AT I-294 / I-88 EXITS / ELECTRIC AVE. (BERKELEY / ELMHURST) | PLANT #: | IM2117 |
| TAGS: | I-294 TRI STATE TOLL, I-290 EISENHOWER EXPWY | GEOPATH #: | 282580 |

WEST SUBURBAN LANDMARK BETWEEN 2X MAJOR CHICAGOLAND ROADWAYS: I-294 TRI-STATE TOLL SOUTHBOUND RHR AND I-290 EISENHOWER EXPWY EASTBOUND LHR JAM AT I-294 / I-88 EXITS FN 25' X 48'W AT ELECTRIC AVE. BERKELEY, IL. VICINITY: ELMHURST, OAK BROOK, HINSDALE, HILLSDALE, BERKELEY, ORD O'HARE INT'L AIRPORT





I-290 EB



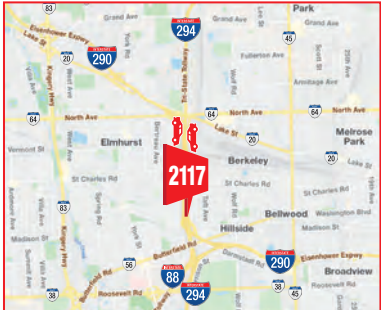
I-294 SB

IM2117



| | | | |
|--------------------|--|-------------------------|--------------------|
| MEDIA: | VINYL BULLETIN | CITY / ST / ZIP: | BERKELEY, IL 60163 |
| DIMENSIONS: | 25'H X 48'W | LAT: | 41.883222 |
| | | LONG: | -87.919985 |
| PRIMARY: | I-294 TRI STATE TOLL SB + I-290 EISENHOWER EXPWY EB | FACES: | NORTH |
| CROSS: | AT I-294 / I-88 EXITS / ELECTRIC AVE. (BERKELEY / ELMHURST) | PLANT #: | IM2117 |
| TAGS: | I-294 TRI STATE TOLL, I-290 EISENHOWER EXPWY | GEOPATH #: | 282580 |

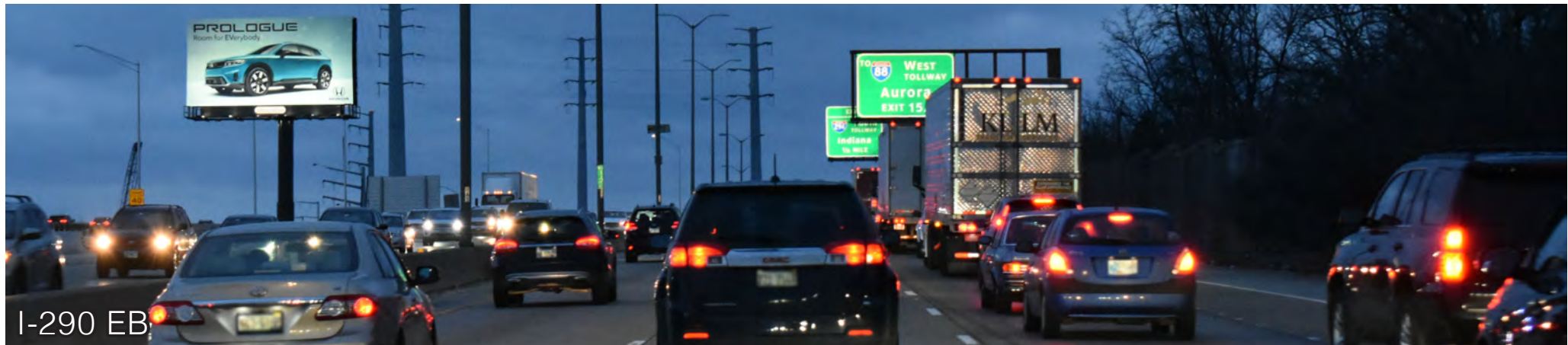
WEST SUBURBAN LANDMARK BETWEEN 2X MAJOR CHICAGOLAND ROADWAYS: I-294 TRI-STATE TOLL SOUTHBOUND RHR AND I-290 EISENHOWER EXPWY EASTBOUND LHR JAM AT I-294 / I-88 EXITS FN 25'H X 48'W AT ELECTRIC AVE. BERKELEY, IL. VICINITY: ELMHURST, OAK BROOK, HINSDALE, HILLSDALE, BERKELEY, ORD O'HARE INT'L AIRPORT





I-294 SB

BETWEEN 2X MAJOR EXPWYS
VINYL BULLETIN



I-290 EB

IM2117



IMAGE OUTDOOR

| | | | |
|--------------------|---|-------------------------|--------------------|
| MEDIA: | VINYL BULLETIN | CITY / ST / ZIP: | BERKELEY, IL 60163 |
| DIMENSIONS: | 25'H X 48'W | LAT: | 41.883222 |
| | | LONG: | -87.919985 |
| PRIMARY: | I-294 TRI STATE TOLL SB + I-290 EISENHOWER EXPWY EB | FACES: | NORTH |
| CROSS: | AT I-294 / I-88 EXITS / ELECTRIC AVE. (BERKELEY / ELMHURST) | PLANT #: | IM2117 |
| TAGS: | I-294 TRI STATE TOLL, I-290 EISENHOWER EXPWY | GEOPATH #: | 282580 |

WEST SUBURBAN LANDMARK BETWEEN 2X MAJOR CHICAGOLAND ROADWAYS: I-294 TRI-STATE TOLL SOUTHBOUND RHR AND I-290 EISENHOWER EXPWY EASTBOUND LHR JAM AT I-294 / I-88 EXITS FN 25'H X 48'W AT ELECTRIC AVE. BERKELEY, IL. VICINITY: ELMHURST, OAK BROOK, HINSDALE, HILLSIDE, BERKELEY, ORD O'HARE INT'L AIRPORT

