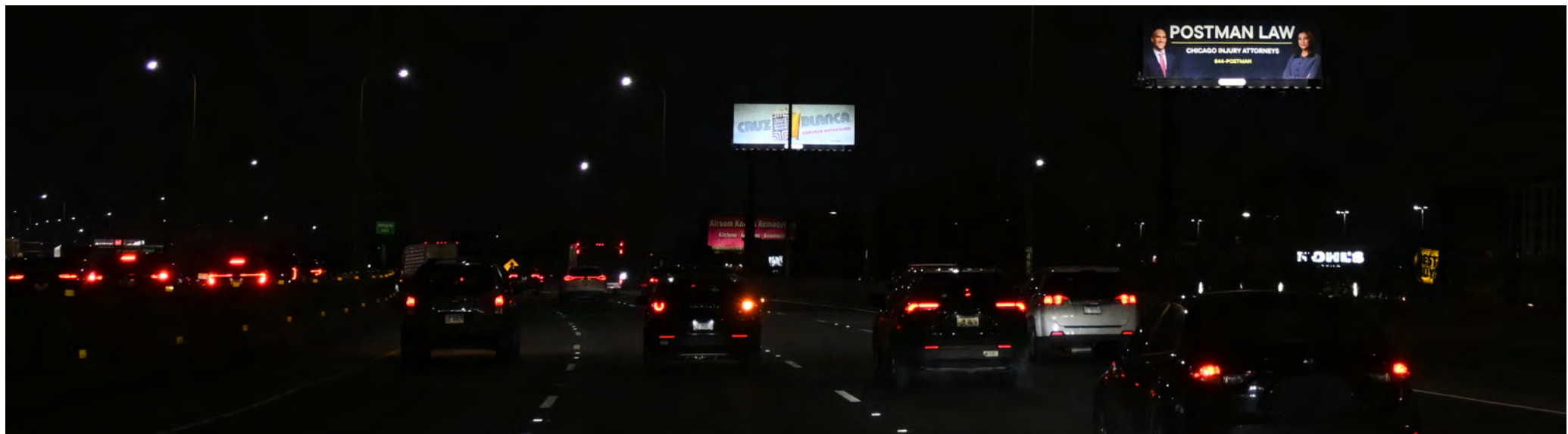


EXPRESSWAY VINYL BULLETIN



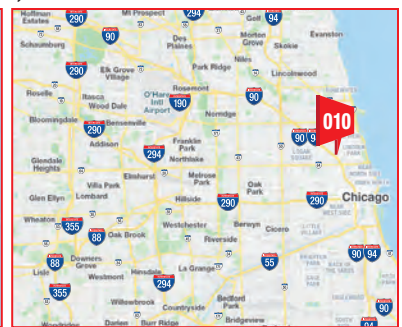
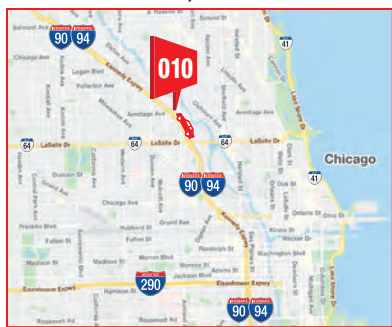
I-90/94 KENNEDY EXPWY WB OUTBOUND AT ASHLAND / ARMITAGE AVES. FS 20'X60' CENTER / RHR TRAFFIC TO NORTHSIDE, NORTH SUBURBS, ORD O'HARE AIRPORT AHEAD

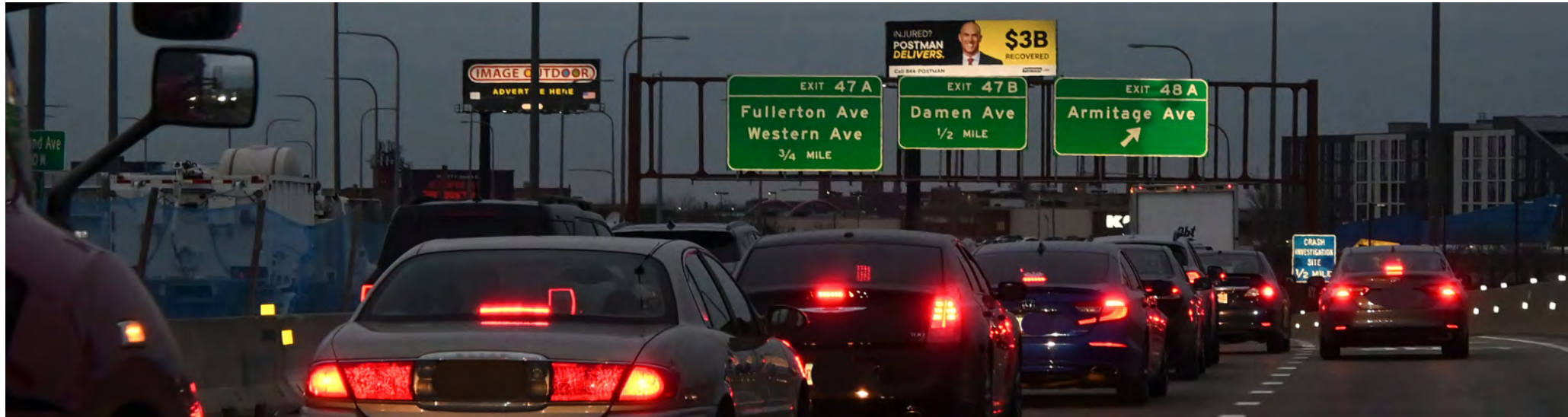
IM010



MEDIA:	VINYL BULLETIN	CITY/STATE/ZIP:	CHICAGO, IL 60614
DIMENSIONS:	20'H X 60'W	LAT:	41.919012
PRIMARY:	I-90/94 KENNEDY EXPWY WB OUT	LONG:	-87.670442
CROSS:	ARMITAGE AVE / ASHLAND AVE	FACES:	SOUTH
TAGS:	I-90/94, KENNEDY EXPRESSWAY, NORTHSIDE, CHICAGO	PLANT #:	IM010
		GEOPATH #:	30911762

I-90/94 KENNEDY EXPRESSWAY WB OUTBOUND AT ASHLAND / ARMITAGE AVE FS 20'X60' CENTER AND RHR. EXIT FOR ASHLAND, ELSTON, ARMITAGE, CORTLAND, WEBSTER, AND FULLERTON AVES. TRAFFIC OUTBOUND TO: NORTHSIDE NEIGHBORHOODS, LINCOLN PARK, WRIGLEYVILLE, NORTH SUBURBS, ORD O'HARE AIRPORT AHEAD





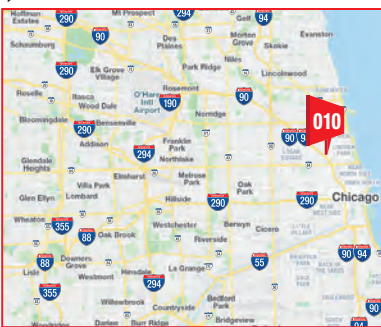
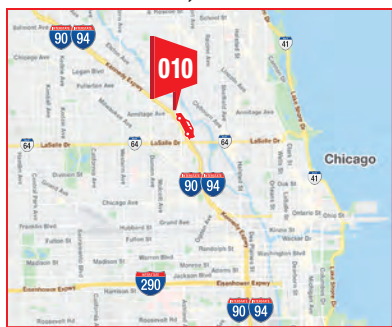
I-90/94 KENNEDY EXPWY WB OUTBOUND AT ASHLAND / ARMITAGE AVES. FS 20'X60' CENTER / RHR TRAFFIC TO NORTHSIDE, NORTH SUBURBS, ORD O'HARE AIRPORT AHEAD

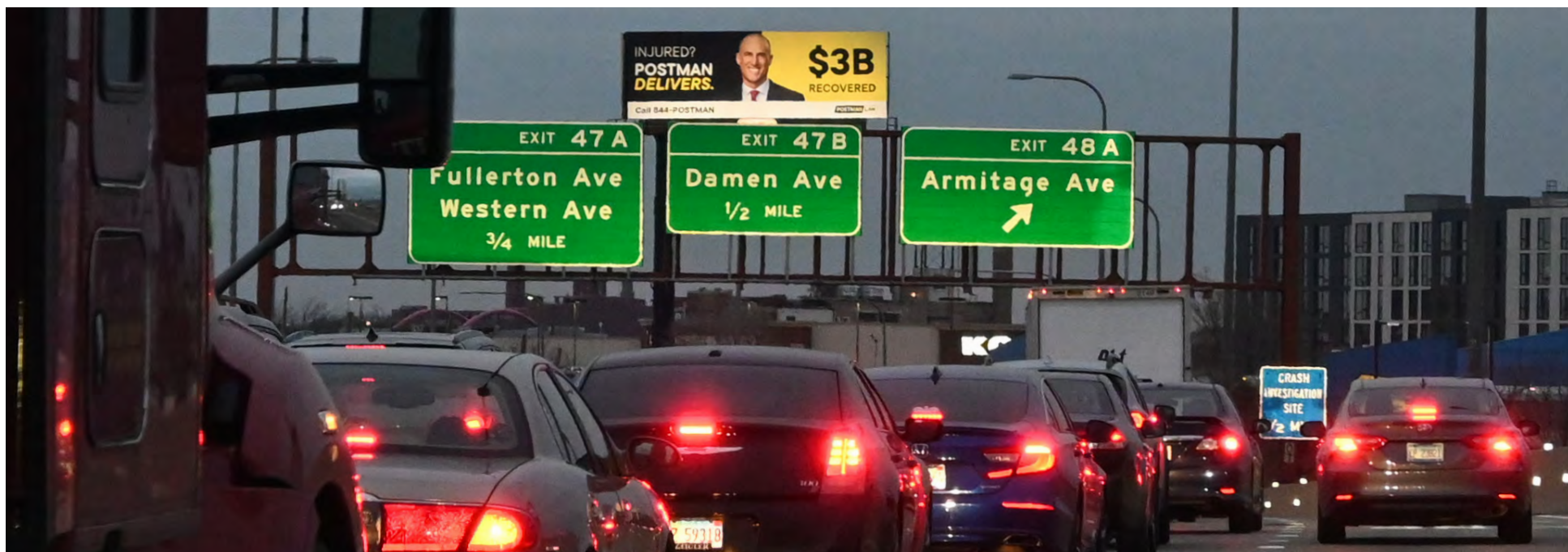
IM010



MEDIA:	VINYL BULLETIN	CITY/STATE/ZIP:	CHICAGO, IL 60614
DIMENSIONS:	20'H X 60'W	LAT:	41.919012
PRIMARY:	I-90/94 KENNEDY EXPWY WB OUT	LONG:	-87.670442
CROSS:	ARMITAGE AVE / ASHLAND AVE	FACES:	SOUTH
TAGS:	I-90/94, KENNEDY EXPRESSWAY, NORTHSIDE, CHICAGO	PLANT #:	IM010
		GEOPATH #:	30911762

I-90/94 KENNEDY EXPRESSWAY WB OUTBOUND AT ASHLAND / ARMITAGE AVE FS 20'X60' CENTER AND RHR. EXIT FOR ASHLAND, ELSTON, ARMITAGE, CORTLAND, WEBSTER, AND FULLERTON AVES. TRAFFIC OUTBOUND TO: NORTHSIDE NEIGHBORHOODS, LINCOLN PARK, WRIGLEYVILLE, NORTH SUBURBS, ORD O'HARE AIRPORT AHEAD





EXPRESSWAY VINYL BULLETIN



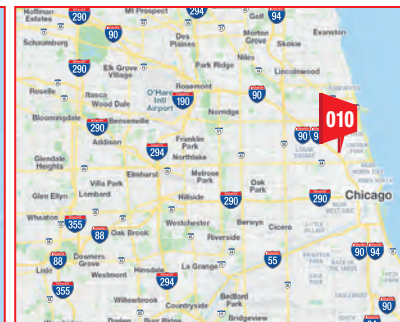
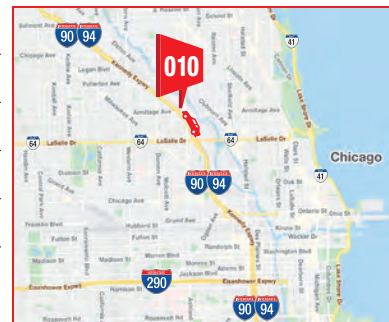
I-90/94 KENNEDY EXPWY WB OUTBOUND AT ASHLAND / ARMITAGE AVES. FS 20'X60' CENTER / RHR TRAFFIC TO NORTHSIDE, NORTH SUBURBS, ORD O'HARE AIRPORT AHEAD

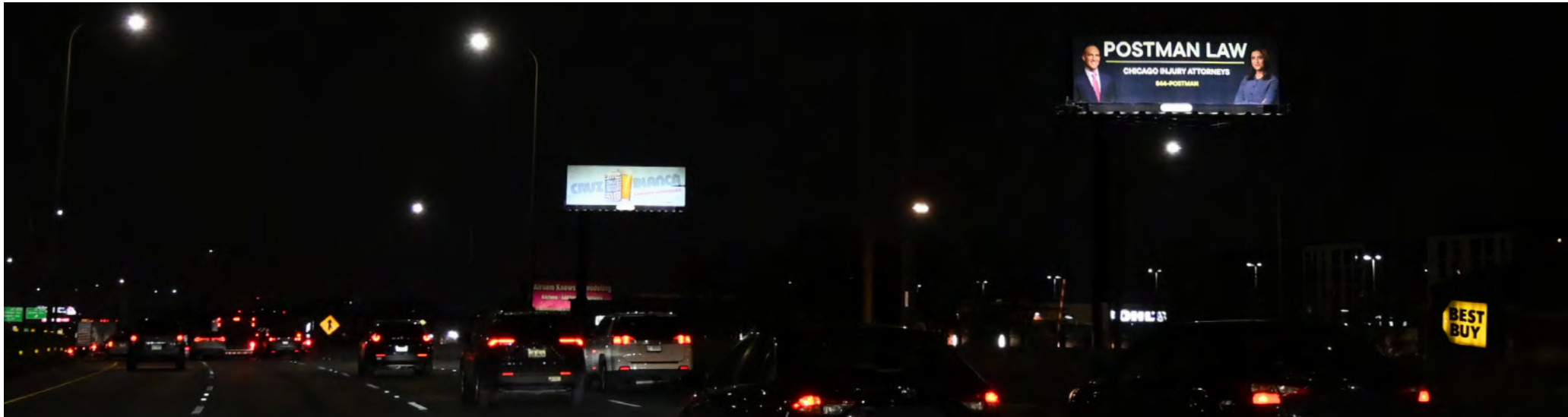
IM010



MEDIA:	VINYL BULLETIN	CITY/STATE/ZIP:	CHICAGO, IL 60614
DIMENSIONS:	20'H X 60'W	LAT:	41.919012
PRIMARY:	I-90/94 KENNEDY EXPWY WB OUT	LONG:	-87.670442
CROSS:	ARMITAGE AVE / ASHLAND AVE	FACES:	SOUTH
TAGS:	I-90/94, KENNEDY EXPRESSWAY, NORTHSIDE, CHICAGO	PLANT #:	IM010
		GEOPATH #:	30911762

I-90/94 KENNEDY EXPRESSWAY WB OUTBOUND AT ASHLAND / ARMITAGE AVE FS 20'X60' CENTER AND RHR. EXIT FOR ASHLAND, ELSTON, ARMITAGE, CORTLAND, WEBSTER, AND FULLERTON AVES. TRAFFIC OUTBOUND TO: NORTHSIDE NEIGHBORHOODS, LINCOLN PARK, WRIGLEYVILLE, NORTH SUBURBS, ORD O'HARE AIRPORT AHEAD





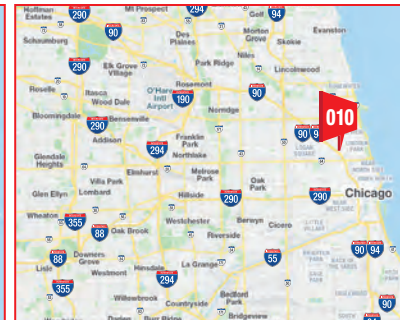
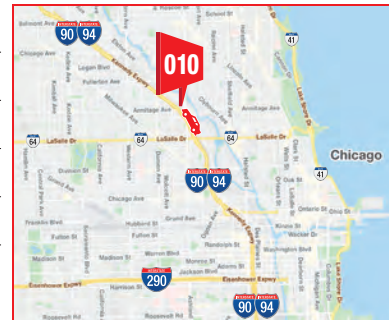
I-90/94 KENNEDY EXPWY WB OUTBOUND AT ASHLAND / ARMITAGE AVES. FS 20'X60' CENTER / RHR TRAFFIC TO NORTHSIDE, NORTH SUBURBS, ORD O'HARE AIRPORT AHEAD

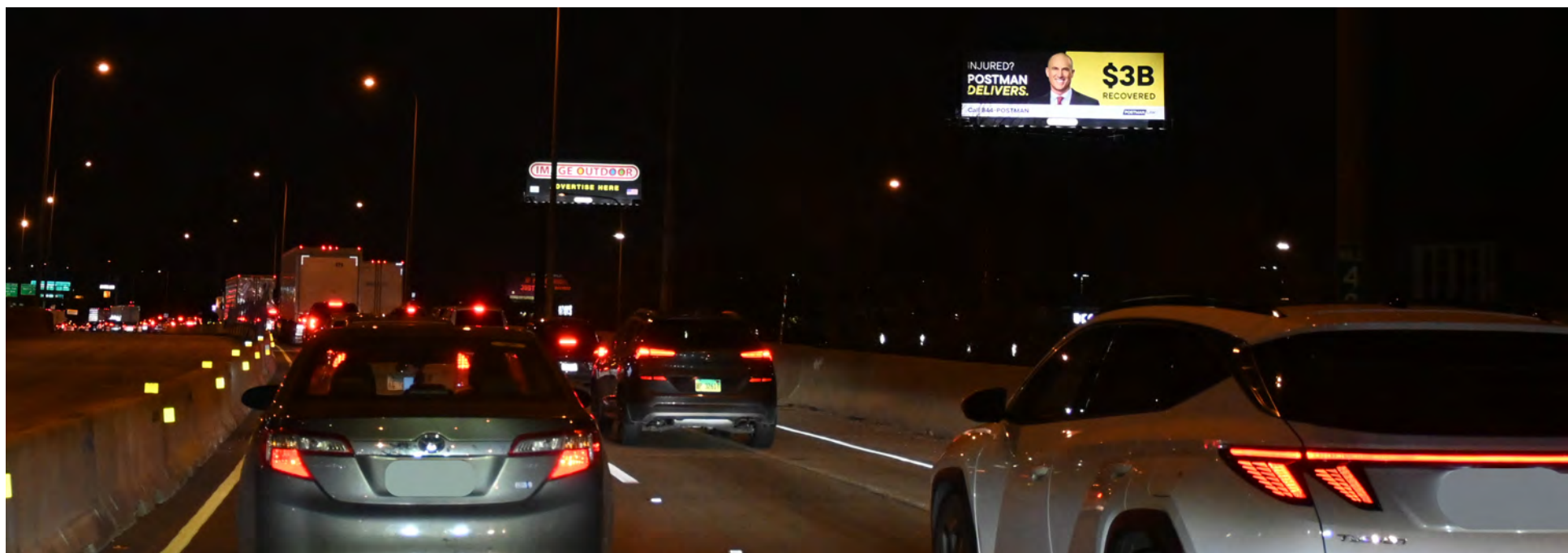
IM010



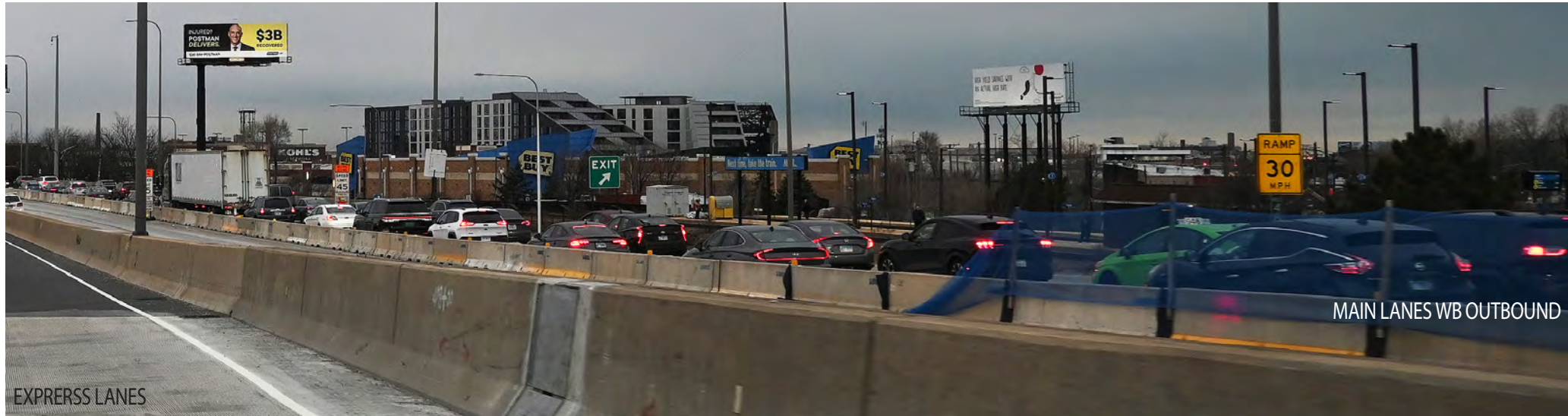
MEDIA:	VINYL BULLETIN	CITY/STATE/ZIP:	CHICAGO, IL 60614
DIMENSIONS:	20'H X 60'W	LAT:	41.919012
PRIMARY:	I-90/94 KENNEDY EXPWY WB OUT	LONG:	-87.670442
CROSS:	ARMITAGE AVE / ASHLAND AVE	FACES:	SOUTH
TAGS:	I-90/94, KENNEDY EXPRESSWAY, NORTHSIDE, CHICAGO	PLANT #:	IM010
		GEOPATH #:	30911762

I-90/94 KENNEDY EXPRESSWAY WB OUTBOUND AT ASHLAND / ARMITAGE AVE FS 20'X60' CENTER AND RHR. EXIT FOR ASHLAND, ELSTON, ARMITAGE, CORTLAND, WEBSTER, AND FULLERTON AVES. TRAFFIC OUTBOUND TO: NORTHSIDE NEIGHBORHOODS, LINCOLN PARK, WRIGLEYVILLE, NORTH SUBURBS, ORD O'HARE AIRPORT AHEAD





EXPRESSWAY VINYL BULLETIN

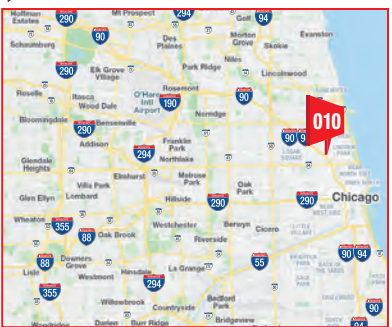
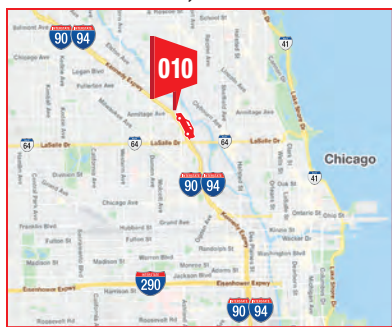


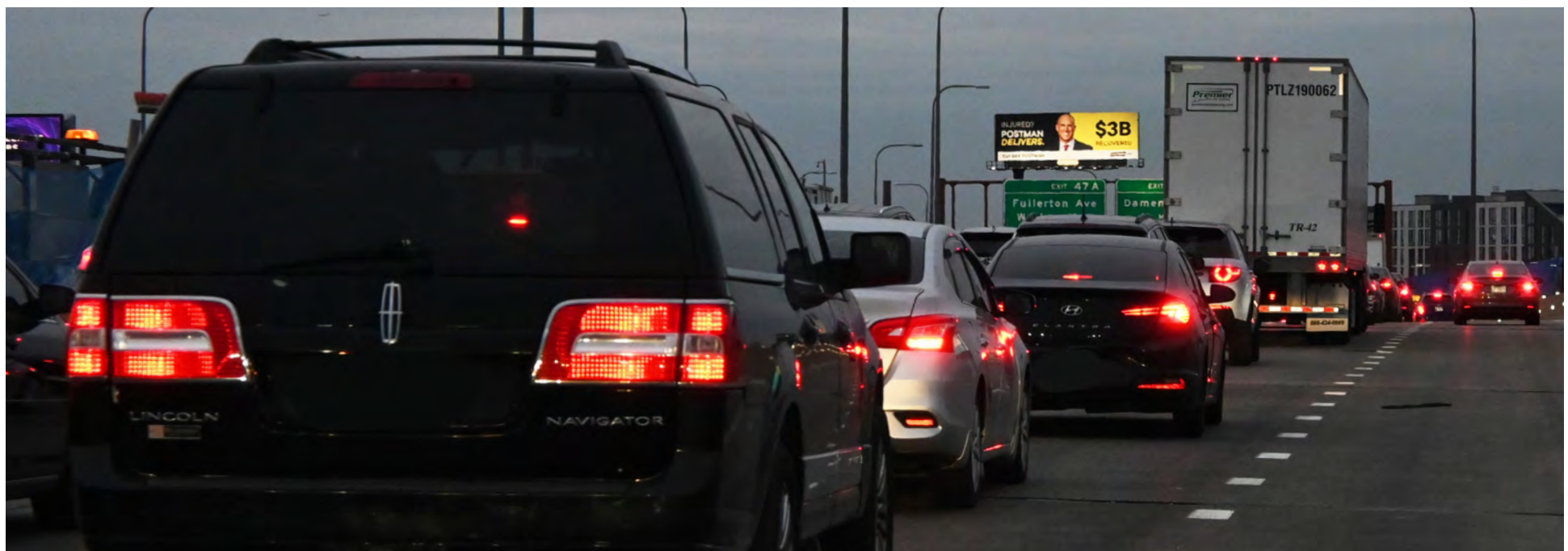
I-90/94 KENNEDY EXPWY WB OUTBOUND AT ASHLAND / ARMITAGE AVES. FS 20'X60' CENTER / RHR TRAFFIC TO NORTHSIDE, NORTH SUBURBS, ORD O'HARE AIRPORT AHEAD

IM010

MEDIA:	VINYL BULLETIN	CITY/STATE/ZIP:	CHICAGO, IL 60614
DIMENSIONS:	20'H X 60'W	LAT:	41.919012
		LONG:	-87.670442
PRIMARY:	I-90/94 KENNEDY EXPWY WB OUT	FACES:	SOUTH
CROSS:	ARMITAGE AVE / ASHLAND AVE	PLANT #:	IM010
TAGS:	I-90/94, KENNEDY EXPRESSWAY, NORTHSIDE, CHICAGO	GEOPATH #:	30911762

I-90/94 KENNEDY EXPRESSWAY WB OUTBOUND AT ASHLAND / ARMITAGE AVE FS 20'X60' CENTER AND RHR. EXIT FOR ASHLAND, ELSTON, ARMITAGE, CORTLAND, WEBSTER, AND FULLERTON AVES. TRAFFIC OUTBOUND TO: NORTHSIDE NEIGHBORHOODS, LINCOLN PARK, WRIGLEYVILLE, NORTH SUBURBS, ORD O'HARE AIRPORT AHEAD





EXPRESSWAY VINYL BULLETIN



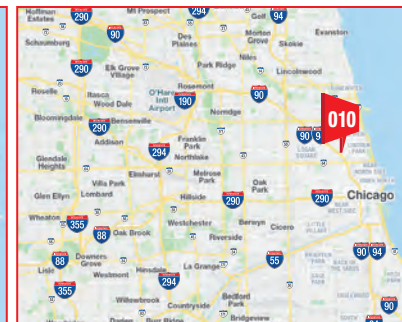
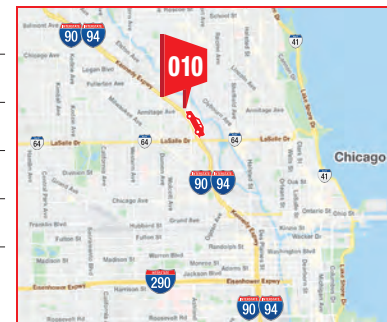
I-90/94 KENNEDY EXPWY WB OUTBOUND AT ASHLAND / ARMITAGE AVES. FS 20'X60' CENTER / RHR TRAFFIC TO NORTHSIDE, NORTH SUBURBS, ORD O'HARE AIRPORT AHEAD

IM010



MEDIA:	VINYL BULLETIN	CITY/STATE/ZIP:	CHICAGO, IL 60614
DIMENSIONS:	20'H X 60'W	LAT:	41.919012
		LONG:	-87.670442
PRIMARY:	I-90/94 KENNEDY EXPWY WB OUT	FACES:	SOUTH
CROSS:	ARMITAGE AVE / ASHLAND AVE	PLANT #:	IM010
TAGS:	I-90/94, KENNEDY EXPRESSWAY, NORTHSIDE, CHICAGO	GEOPATH #:	30911762

I-90/94 KENNEDY EXPRESSWAY WB OUTBOUND AT ASHLAND / ARMITAGE AVE FS 20'X60' CENTER AND RHR. EXIT FOR ASHLAND, ELSTON, ARMITAGE, CORTLAND, WEBSTER, AND FULLERTON AVES. TRAFFIC OUTBOUND TO: NORTHSIDE NEIGHBORHOODS, LINCOLN PARK, WRIGLEYVILLE, NORTH SUBURBS, ORD O'HARE AIRPORT AHEAD





ASHLAND AVE. EXIT RAMP RED LIGHT

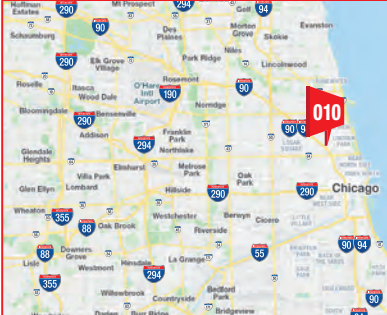
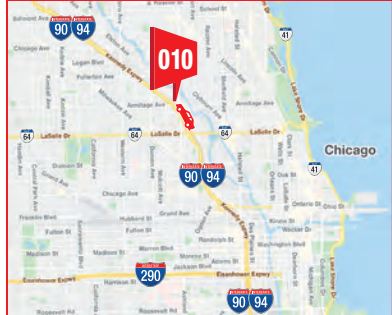
I-90/94 KENNEDY EXPWY WB OUTBOUND AT ASHLAND / ARMITAGE AVES. FS 20'X60' CENTER / RHR TRAFFIC TO NORTHSIDE, NORTH SUBURBS, ORD O'HARE AIRPORT AHEAD

IM010



MEDIA:	VINYL BULLETIN	CITY/STATE/ZIP:	CHICAGO, IL 60614
DIMENSIONS:	20'H X 60'W	LAT:	41.919012
		LONG:	-87.670442
PRIMARY:	I-90/94 KENNEDY EXPWY WB OUT	FACES:	SOUTH
CROSS:	ARMITAGE AVE / ASHLAND AVE	PLANT #:	IM010
TAGS:	I-90/94, KENNEDY EXPRESSWAY, NORTHSIDE, CHICAGO	GEOPATH #:	30911762

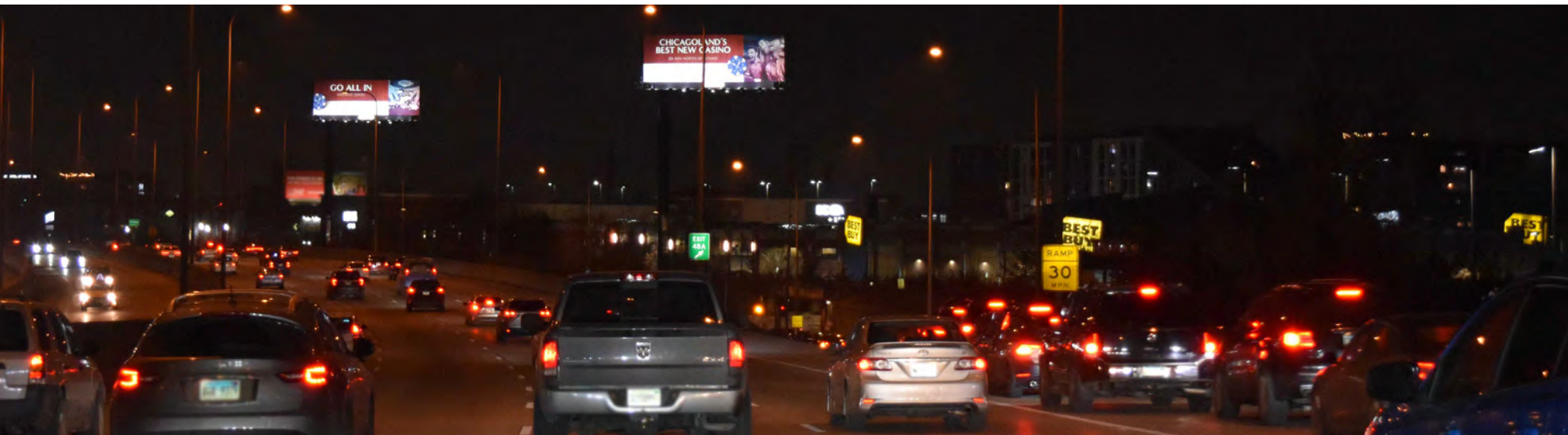
I-90/94 KENNEDY EXPRESSWAY WB OUTBOUND AT ASHLAND / ARMITAGE AVE FS 20'X60' CENTER AND RHR. EXIT FOR ASHLAND, ELSTON, ARMITAGE, CORTLAND, WEBSTER, AND FULLERTON AVES. TRAFFIC OUTBOUND TO: NORTHSIDE NEIGHBORHOODS, LINCOLN PARK, WRIGLEYVILLE, NORTH SUBURBS, ORD O'HARE AIRPORT AHEAD



ASHLAND AVE. EXIT RAMP RED LIGHT



SPECTACULAR 2X 20'X60'S

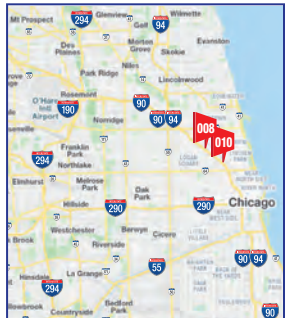
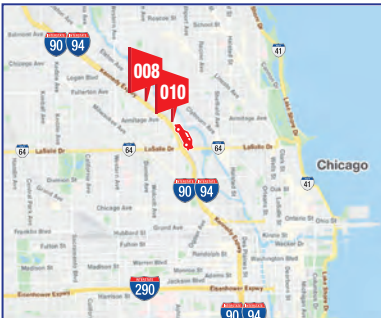


2X 20'X60'S CONSECUTIVE THROW MESSAGE LANDMARKS: I-90/94 KENNEDY EXPWY WB OUT AT ASHLAND, ARMITAGE, ELSTON AVES. FS, FS

IM010: 20'X60'
IM008: 20'X60'

MEDIA:	VINYL BULLETINS 2X 20'X60'S	AREA:	I-90/94, ASHLAND, ARMITAGE, BUCKTOWN, WICKER PARK, DEPAUL
DIMENSIONS:	2X 20'X60'S	LAT:	41.919012
		LONG:	-87.670442
PRIMARY:	I-90/94 KENNEDY EXPWY WB OUT	FACES:	S + S
PLANT #:	IM010 + IM008	GEOPATH #:	30911762 + 30911760

2X 20'X60'S: CONSECUTIVE THROW MESSAGE OPPORTUNITY: I-90/94 KENNEDY EXPRESSWAY WB OUTBOUND HUGE TRAFFIC KENNEDY EXPWY WB TO NORTHSIDE, NORTH SUBURBS, ORD OHARE AIRPORT. EXPRESS LANES AND LOCAL LANES, CENTER AND RHR'S AT EXIT FOR ASHLAND, ARMITAGE, ELSTON AVES. CHICAGO NEIGHBORHOODS OF: BUCKTOWN, WICKERPARK, DEPAUL, LAKEVIEW, WRIGLEY, N. SUBURBS, ORD.





SPECTACULAR 2X 20'X60'S



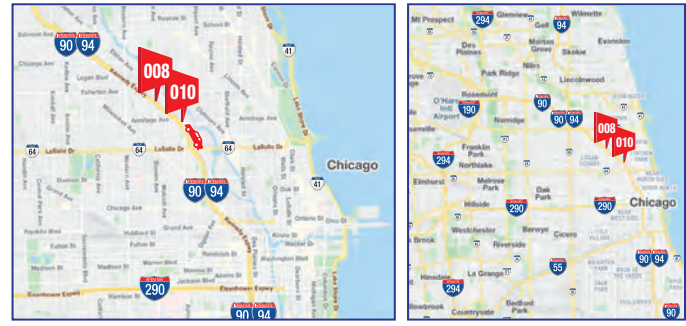
2X 20'X60'S CONSECUTIVE THROW MESSAGE LANDMARKS: I-90/94 KENNEDY EXPWY WB OUT AT ASHLAND, ARMITAGE, ELSTON AVES. FS, FS

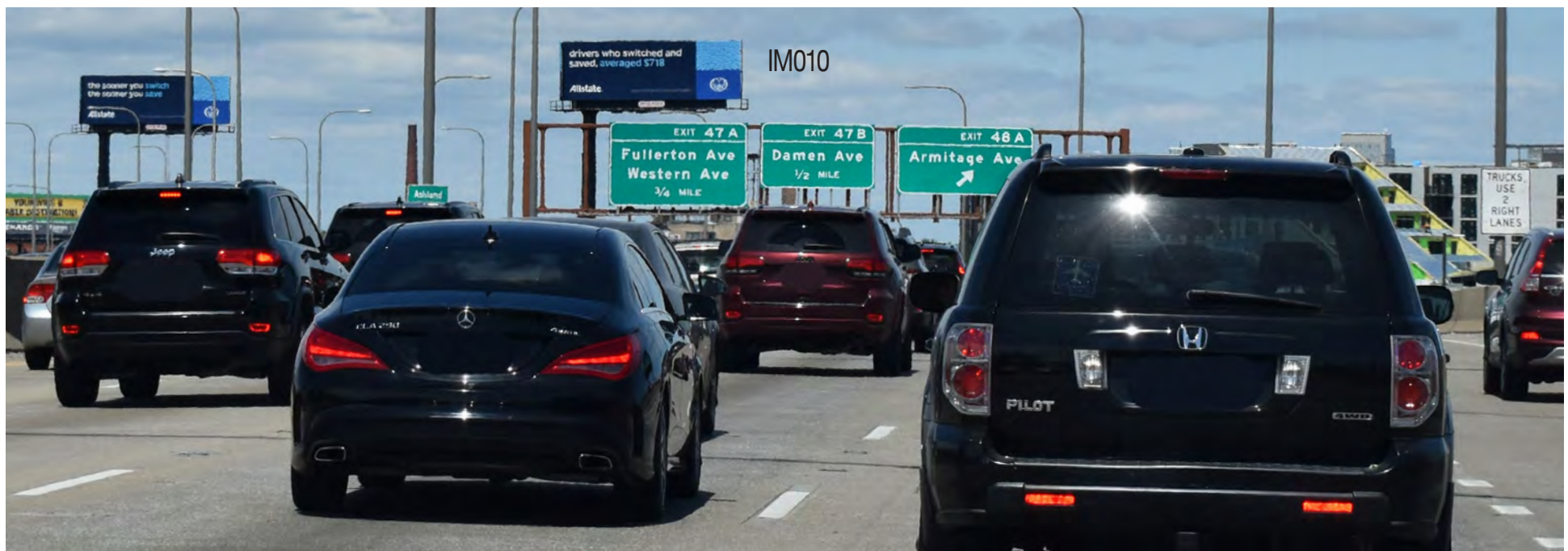
IM010: 20'X60'_{1ST}
IM008: 20'X60'_{2ND}

MEDIA:	VINYL BULLETINS 2X 20'X60'S	AREA:	I-90/94, ASHLAND, ARMITAGE, BUCKTOWN, WICKER PARK, DEPAUL
DIMENSIONS:	2X 20'X60'S	LAT:	41.919012
		LONG:	-87.670442
PRIMARY:	I-90/94 KENNEDY EXPWY WB OUT	FACES:	S + S
PLANT #:	IM010 + IM008	GEOPATH #:	30911762 + 30911760



2X 20'X60'S: CONSECUTIVE THROW MESSAGE OPPORTUNITY: I-90/94 KENNEDY EXPRESSWAY WB OUTBOUND HUGE TRAFFIC KENNEDY EXPWY WB TO NORTHSIDE, NORTH SUBURBS, ORD OHARE AIRPORT. EXPRESS LANES AND LOCAL LANES, CENTER AND RHR'S AT EXIT FOR ASHLAND, ARMITAGE, ELSTON AVES. CHICAGO NEIGHBORHOODS OF: BUCKTOWN, WICKERPARK, DEPAUL, LAKEVIEW, WRIGLEY, N. SUBURBS, ORD.





EXPRESSWAY VINYL BULLETIN



I-90/94 KENNEDY EXPWY WB OUTBOUND AT ASHLAND / ARMITAGE AVES. FS 20'X60' CENTER / RHR TRAFFIC TO NORTHSIDE, NORTH SUBURBS, ORD O'HARE AIRPORT AHEAD

IM010



MEDIA:	VINYL BULLETIN	CITY/STATE/ZIP:	CHICAGO, IL 60614
DIMENSIONS:	20'H X 60'W	LAT:	41.919012
		LONG:	-87.670442
PRIMARY:	I-90/94 KENNEDY EXPWY WB OUT	FACES:	SOUTH
CROSS:	ARMITAGE AVE / ASHLAND AVE	PLANT #:	IM010
TAGS:	I-90/94, KENNEDY EXPRESSWAY, NORTHSIDE, CHICAGO	GEOPATH #:	30911762

I-90/94 KENNEDY EXPRESSWAY WB OUTBOUND AT ASHLAND / ARMITAGE AVE FS 20'X60' CENTER AND RHR. EXIT FOR ASHLAND, ELSTON, ARMITAGE, CORTLAND, WEBSTER, AND FULLERTON AVES. TRAFFIC OUTBOUND TO: NORTHSIDE NEIGHBORHOODS, LINCOLN PARK, WRIGLEYVILLE, NORTH SUBURBS, ORD O'HARE AIRPORT AHEAD

